

Accessories 1

Accessories 2

Accessories 3

Accessories 4

Accessories 5

Accessories 6

Control valves

Pressure safety valves



Sommer-automatic

Grippers

Separators

Swivel units

Rotating jaws

Axial compensators

Tool changers

Linear cylinders

Shock absorbers

Rotary cylinders

Air vane motors

Vacuum components

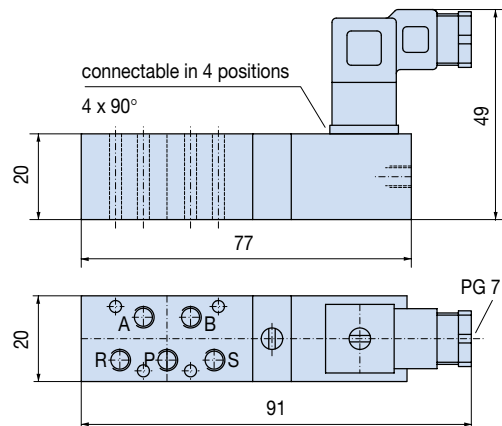
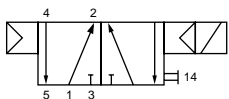
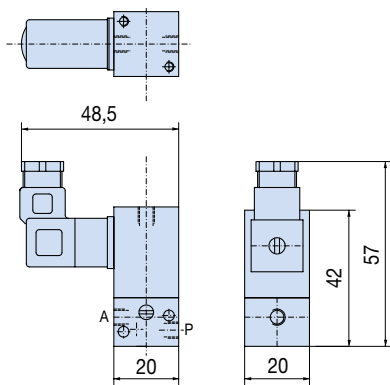
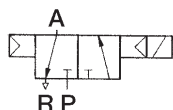
Accessories

Quick finder



3/2-way-valve 1/8" 5/2-way-valve 1/8"

Order no.:			
M04310-48	M04310-220	M04510-48	M045310-220
Voltage = [V]:			
24/48	110/220	24/48	110/220
Nominal width [mm]:			
4	4	4	4
Nominal throughflow [l/min.]:			
360	360	360	360
Min./max. operating pressure [bar]:			
2/10	2/10	2/10	2/10
Switching time [ms]:			
16	16	14	14
Min./max. operating temperature [°]:			
10/70	10/70	10/70	10/70
Protection class to DIN40050:			
IP65	IP65	IP65	IP65
Weight:			
0,176	0,176	0,202	0,202
Power consumption:			
=4,5 . ≈ 9,6 VA and = 24V with 2,3 W			



3/2 way valve 1/8"

Operation:

Actuated by a continuous electrical signal. De-energizing the coil returns the valve to normal position through internal pressure. This type has a dead passageway from P to A. The exhaust air can be throttled.

Protection-type IP 65 in accordance with DIN 40050

5/2 way valve 1/8"

Operation:

Actuated by a continuous electrical signal. De-energizing the coil returns the valve to normal position through internal pressure. This type has a dead passageway from P to A. The exhaust air can be throttled.

Protection-type IP 65 in accordance with DIN 40050