

Vacuum cups		Adapter		Vacuum generator
VNR	SVG	VG	VIP	



Sommer-automatic
Grippers
Separators
Swivel units
Rotating jaws
Axial compensators
Tool changers
Linear cylinders
Shock absorbers
Rotary cylinders
Air vane motors
Vacuum components
Accessories
Quick finder



Vacuum sensing valve

to control the vacuum power

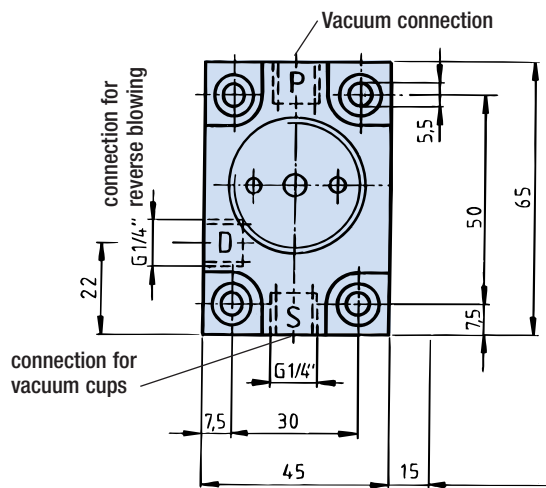
- ▶ integrated push-button
- ▶ full vacuum pressure even at free vacuum cup
- ▶ short reaction time
- ▶ workpiece sensing

Order no.:	VNR 861.20
Min. switching range [bar]:	0,2
Max. switching range [bar]:	0,99
Min./max. operating temperature [°C]:	0 / 60
Weight [kg]:	0,125

Note: On porous workpieces, it is necessary to adjust the response sensitivity, using "Control Screw L". This makes the vacuum economical. The vacuum develops directly at the vacuum cup eliminating delay caused by long lines. Additional vacuum switches and expensive control circuits are unnecessary. The parts can be deposited quickly with a short blast of air. A threaded connection is provided for the inductive switch (order NJ8-E2), so an electrical signal can be transmitted indicating whether or not the workpiece has been picked up.

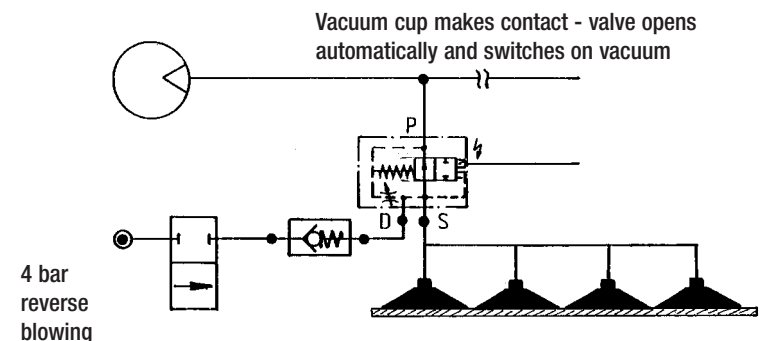
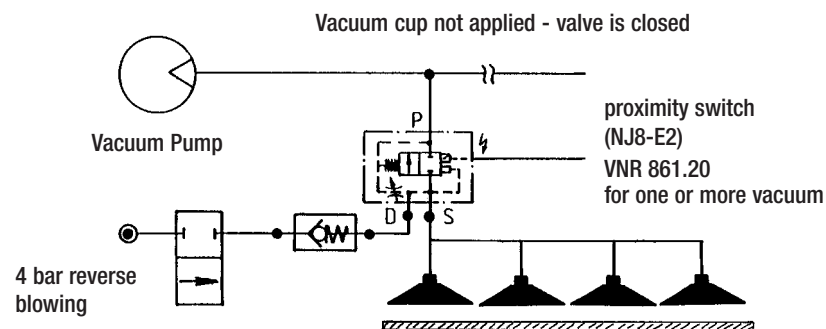
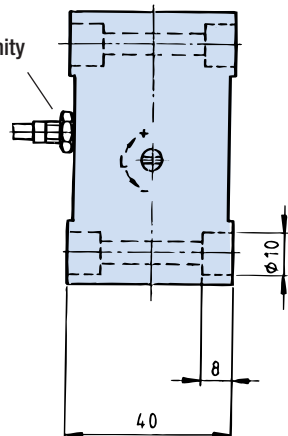
The vacuum valve opens automatically when the rubber suction cup is applied - shortening the cycle time.

Connection Example:



Inductive proximity switch

Order no.: NJ8-E2 to match VNR861.20



Note: for long lines insert a one-way valve for higher cycles