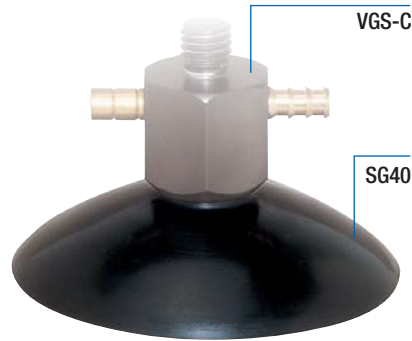


Vacuum cups			Adapter			Vacuum generator						
SM	SG	NS	PNS	KNS	SFK	SF	SR	SK	OV	POV	KOV	SFO



Vacuum cups

Remember!
 Vacuum cup and support adapter are ordered as separate part numbers.
 All possible combinations clearly displayed on page 400.



Sommer-automatic
Grippers
Separators
Swivel units
Rotating jaws
Axial compensators
Tool changers
Linear cylinders
Shock absorbers
Rotary cylinders
Air vane motors
Vacuum components
Accessories
Quick finder

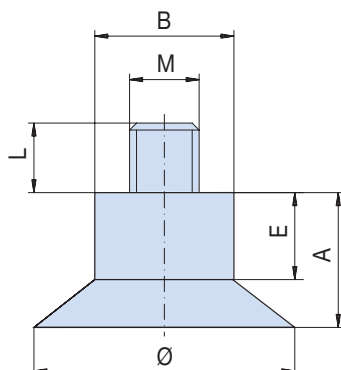
Order no.:						
SG6	SG8	SG10	SG12	SG15	SG18	SG22
Vacuum force [N]:						
1,70	3,01	4,71	6,78	10,60	15,20	22,80
Dimension ø [mm]:						
6	8	10	12	15	18	22
Dimension A [mm]:						
8	8	9	9	10	10	11
Dimension B [mm]:						
5	5	8	8	8	8	8
Dimension E [mm]:						
7	7	7	7	6	6	6
Dimension L [mm]:						
4	4	4	4	4	4	4
Dimension M [mm]:						
M4	M4	M5	M5	M5	M5	M5

• **ø6 mm to 130 mm**
 The SG series vacuum cups are delivered with a hollow stud fitting. The corresponding external thread is shown in the table as dimension "M".
 This series has a vacuum force of up to 0.8 bar and a smooth dry surface.

Order no.:						
SG25	SG30	SG35	SG40	SG60	SG85	SG130
Vacuum force [N]:						
29,40	42,40	57,70	75,40	170	340	769
Dimension ø [mm]:						
25	30	35	40	60	85	130
Dimension A [mm]:						
11	12	12	14	16	36	42
Dimension B [mm]:						
8	8	8	15	15	25	25
Dimension E [mm]:						
6	6	6	4	4	12	12
Dimension L [mm]:						
6	6	6	10	10	10	10
Dimension M [mm]:						
M5	M5	M5	M8	M8	M12	M12

All data measured at 0.6 bar vacuum.

See Page 399 for Accessory list.



Version	Material	Color	Heat-resistant	Durometer	Extra charge	Add to part # when ordering
Standard	neoprene	black	-30° - 120° C Oil tolerant	65 ±3	no	-
Heat-resistant	silicone	blue	200° C	60 ±5	no	SI
Food-handling	silicone tempered	white	200° C	60 ±5	yes	L