

Air vane motor, stall-proof

Air vane motor, not stall-proof

DLM-RLG180	DLM-RG300	DLM-RLG400	DLM-RG550	DLM-RLG800	DLM-RG1000	Flange
------------	-----------	-------------------	-----------	------------	------------	--------



- Sommer-automatic
- Grippers
- Separators
- Swivel units
- Rotating jaws
- Axial compensators
- Tool changers
- Linear cylinders
- Shock absorbers
- Rotary cylinders
- Air vane motors**
- Vacuum components
- Accessories
- Quick finder



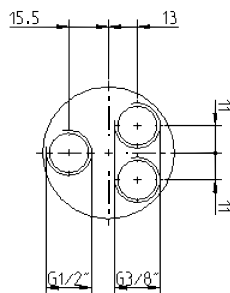
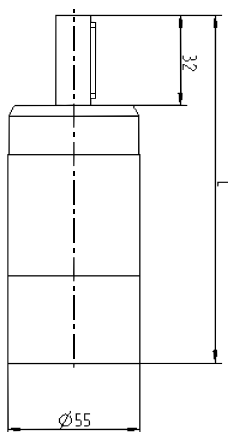
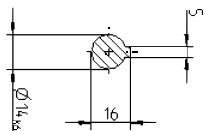
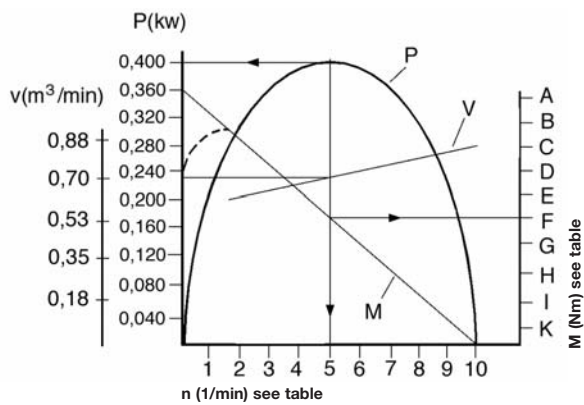
Flange
Not Included

Air vane motor

stall-proof

Advantages, benefits, comparisons and tips!
Stacks of information all about this product are on page 381.

Order no.:						
DLM-RLG 400-1065	DLM-RLG 400-900	DLM-RLG 400-240	DLM-RLG 400-200	DLM-RLG 400-190	DLM-RLG 400-170	
Nominal output [Watt]:						
400	400	400	400	400	400	
Nominal speed [U/min.]:						
1065	900	240	200	190	170	
Idling speed [U/min.]:						
2130	1800	480	400	380	340	
Torque [Nm]:						
3,58	4,24	15,91	19,09	20,1	22,46	
Air consumption [m³/min.]:						
0,7	0,7	0,7	0,7	0,7	0,7	
Weight [kg]:						
1,35	1,35	1,7	1,7	1,7	1,7	
Dimension L [mm]:						
172	172	213	213	213	213	



1	2	3	4	5	6	7	8	9	10
Output diagram n (1/min)									
DLM-RLG400-1065									
213	426	639	852	1065	1278	1491	1704	1917	2130
DLM-RLG400-900									
180	360	540	720	900	1080	1260	1440	1620	1800
DLM-RLG400-240									
48	96	144	192	240	288	336	384	432	480
DLM-RLG400-200									
40	80	120	160	200	240	280	320	360	400
DLM-RLG400-190									
38	76	114	152	190	228	266	304	342	380
DLM-RLG400-170									
34	68	102	136	170	204	238	272	306	340

A	B	C	D	E	F	G	H	I	K
Output diagram M (Nm)									
DLM-RLG400-1065									
0,72	1,43	2,15	2,86	3,58	4,30	5,01	5,73	6,44	7,16
DLM-RLG400-900									
0,85	1,70	2,54	3,39	4,24	5,09	5,94	6,78	7,63	8,48
DLM-RLG400-240									
3,18	6,36	9,55	12,73	15,91	19,09	22,27	25,46	28,64	31,82
DLM-RLG400-200									
3,82	7,64	11,45	15,27	19,09	22,91	26,73	30,54	34,36	38,18
DLM-RLG400-190									
4,02	8,04	12,06	16,08	20,10	24,12	28,14	32,16	36,18	40,20
DLM-RLG400-170									
4,49	8,98	13,48	17,97	22,46	26,95	31,44	35,94	40,43	44,92

See Page 381 for Accessory list.