

Air vane motor, stall-proof

Air vane motor, not stall-proof

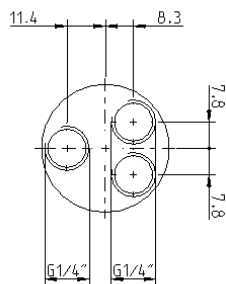
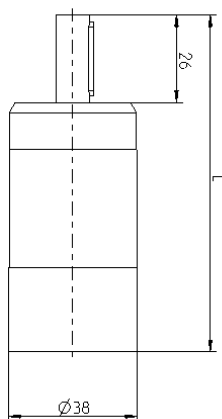
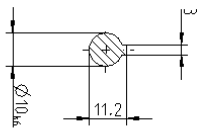
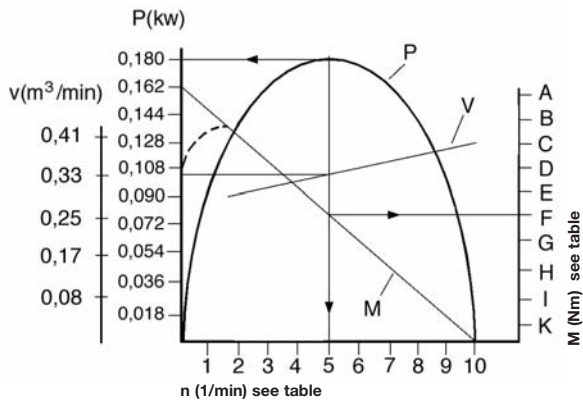
DLM-RLG180	DLM-RG300	DLM-RLG400	DLM-RG550	DLM-RLG800	DLM-RG1000	Flange
-------------------	-----------	------------	-----------	------------	------------	--------



- Sommer-automatic
- Grippers
- Separators
- Swivel units
- Rotating jaws
- Axial compensators
- Tool changers
- Linear cylinders
- Shock absorbers
- Rotary cylinders
- Air vane motors**
- Vacuum components
- Accessories
- Quick finder



Flange
Not Included



Air vane motor

stall-proof

Advantages, benefits, comparisons and tips!
Stacks of information all about this product are on page 381.

Order no.:							
DLM-RLG 180-2310	DLM-RLG 180-1300	DLM-RLG 180-1020	DLM-RLG 180-560	DLM-RLG 180-315	DLM-RLG 180-245	DLM-RLG 180-175	DLM-RLG 180-140
Nominal output [Watt]:							
180	180	180	180	180	180	180	180
Nominal speed [U/min.]:							
2310	1300	1020	560	315	245	175	140
Idling speed [U/min.]:							
4620	2600	2040	1120	630	490	350	280
Torque [Nm]:							
0,74	1,32	1,68	3,06	5,45	7,02	9,82	12,27
Air consumption [m³/min.]:							
0,33	0,33	0,33	0,33	0,33	0,33	0,33	0,33
Weight [kg]:							
0,5	0,5	0,5	0,62	0,62	0,62	0,62	0,62
Dimension L [mm]:							
145	145	145	179	179	179	179	179

1	2	3	4	5	6	7	8	9	10
Output diagram n (1/min)									
DLM-RLG180-2310									
462	924	1386	1848	2310	2772	3234	3696	4158	4620
DLM-RLG180-1300									
260	520	780	1040	1300	1560	1820	2080	2340	2600
DLM-RLG180-1020									
204	408	612	816	1020	1224	1428	1632	1836	2040
DLM-RLG180-560									
112	224	336	448	560	672	784	896	1008	1120
DLM-RLG180-315									
63	126	189	252	315	378	441	504	567	630
DLM-RLG180-245									
49	98	147	196	245	294	343	392	441	490
DLM-RLG180-175									
35	70	105	140	175	210	245	280	315	350
DLM-RLG180-140									
28	56	84	112	140	168	196	224	252	280

A	B	C	D	E	F	G	H	I	K
Output diagram M (Nm)									
DLM-RLG180-2310									
0,15	0,30	0,44	0,59	0,74	0,89	1,04	1,18	1,33	1,48
DLM-RLG180-1300									
0,26	0,53	0,79	1,06	1,32	1,58	1,85	2,11	2,38	2,64
DLM-RLG180-1020									
0,34	0,67	1,01	1,34	1,68	2,02	2,35	2,69	3,02	3,36
DLM-RLG180-560									
0,61	1,22	1,84	2,45	3,06	3,67	4,28	4,90	5,51	6,12
DLM-RLG180-315									
1,09	2,18	3,27	4,36	5,45	6,54	7,63	8,72	9,81	10,90
DLM-RLG180-245									
1,40	2,81	4,21	5,62	7,02	8,42	9,83	11,23	12,64	14,04
DLM-RLG180-175									
1,96	3,93	5,89	7,86	9,82	11,78	13,75	15,71	17,68	19,64
DLM-RLG180-140									
2,45	4,91	7,36	9,82	12,27	14,72	17,18	19,63	22,09	24,54

See Page 381 for Accessory list.