

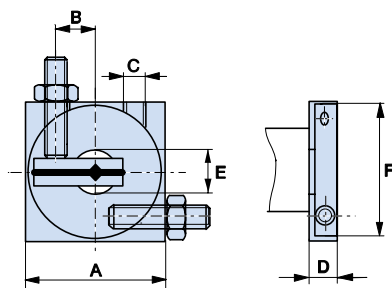
Pneumatic rotor

Step rotors

- PRN1
- PRN3
- PRN10
- PRN20
- PRN30
- PRN50
- PRN150
- PRN300
- PRN800
- Accessories



- Sommer-automatic
- Grippers
- Separators
- Swivel units
- Rotating jaws
- Axial compensators
- Tool changers
- Linear cylinders
- Shock absorbers
- Rotary cylinders
- Air vane motors
- Vacuum components
- Accessories
- Quick finder



Rotation limiter Stop-stroke adjusting screw

Rotation limiter

Order no.:							
DB1	DB3	DB10	DB20	DB30	DB50	DB150	DB300
Dimension A [mm]:							
30	40	50	60	80	80	120	120
Dimension B [mm]:							
10	14	16	18	28	28	40	40
Dimension C [mm]:							
M5	M5	M8x1	M8x1	M8x1	M8x1	M10x1	M10x1
Dimension D [mm]:							
10	10	12	16	20	20	25	31
Dimension E (Øh7) [mm]:							
8	12	12	16	20	20	30	45
Dimension F [mm]:							
29	37	42	54	76	76	110	110



Stop-stroke adjusting screw

Order no.:						
NJ3-E2/02	AI-M8x1-38	AI-M8x1-53	AI-M10x1	AO-M8x1-38	AO-M8x1-53	AO-M10x1
To match:						
DB1-DB3	DB10-DB20	DB20-DB50	DB150-DB300	DB10-DB20	DB20-DB50	DB150-DB300
Thread:						
M5	M8x1	M8x1	M10x1	M8x1	M8x1	M10x1
To match proximity switch:						
-	M12x1	M12x1	M12x1	-	-	-

