

Tool changer		WW50	WW80	WW100	WW120	WW180	WW220	WW220E	WW250	HW80	Storage stations	Connector
--------------	--	------	------	-------	-------	-------	-------	--------	-------	------	------------------	-----------



# Manual changer

Advantages, benefits, comparisons and tips! Stacks of information all about this product are on page 299.

Order no.:	
HW80 F	HW80 L
Construction height in locked position [mm]*:	
68	68
Handling weight max. [kg]:	
100	100
Electrical connector 25 polig***:	
1x	1x
Pneumatic connectors M5 + 1/8" [Stck.]:	
4 + 2	4 + 2
Repeatability ± [mm]:	
0,02	0,02
Min./max. operating temperature [°C]:	
5/80	5/80
Weight [kg]:	
0,618	0,335

All data measured at 6 bar.

\* incl. adapter panel (loose part)

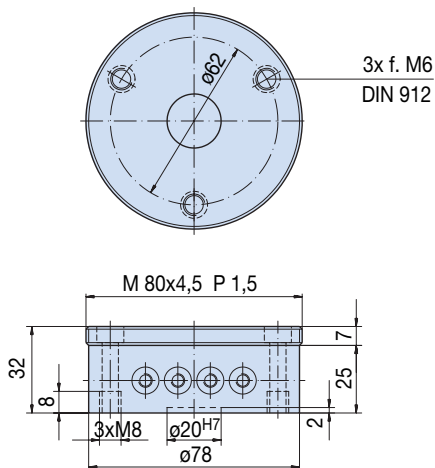
\*\*\* included in shipment (see page 312)

## Manual Changer

- Fixed part for infrequent tool changes
- Loose part - tool side

This manual changer is for handling units and robots which do not need to change tools frequently. The tool change part can be removed in seconds by turning the coupling sleeve. The air and electrical connections are arranged identically to our pneumatic changers, except that the coupling sleeve acts as the locking cylinder.

### Loose part



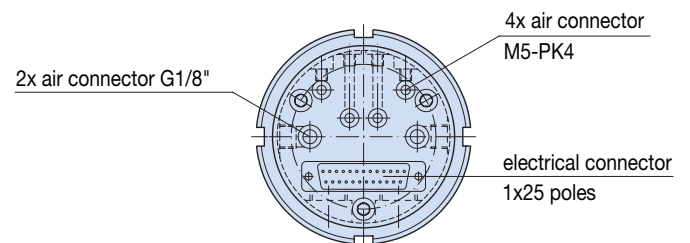
F = fixed part (robot side)



L = loose part (tool side)



Sommer-automatic
Grippers
Separators
Swivel units
Rotating jaws
Axial compensators
<b>Tool changers</b>
Linear cylinders
Shock absorbers
Rotary cylinders
Air vane motors
Vacuum components
Accessories
Quick finder



### Fixed part

