

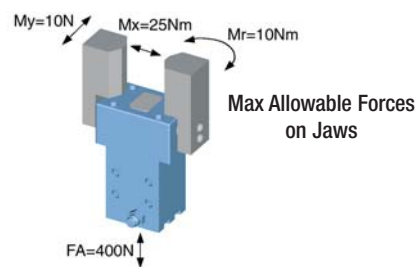
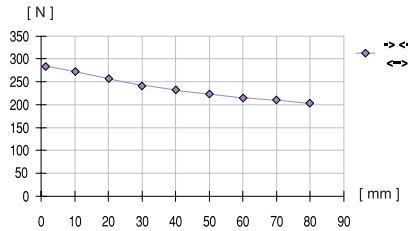
Parallel gripper		Three-jaw gripper		Angle gripper	Internal-hole gripper	Other grippers	<b>Electric gripper</b>
GEP1402	GEP1406	GEP1602	<b>GEP1606</b>				



# Electric parallel gripper with sealed round guide

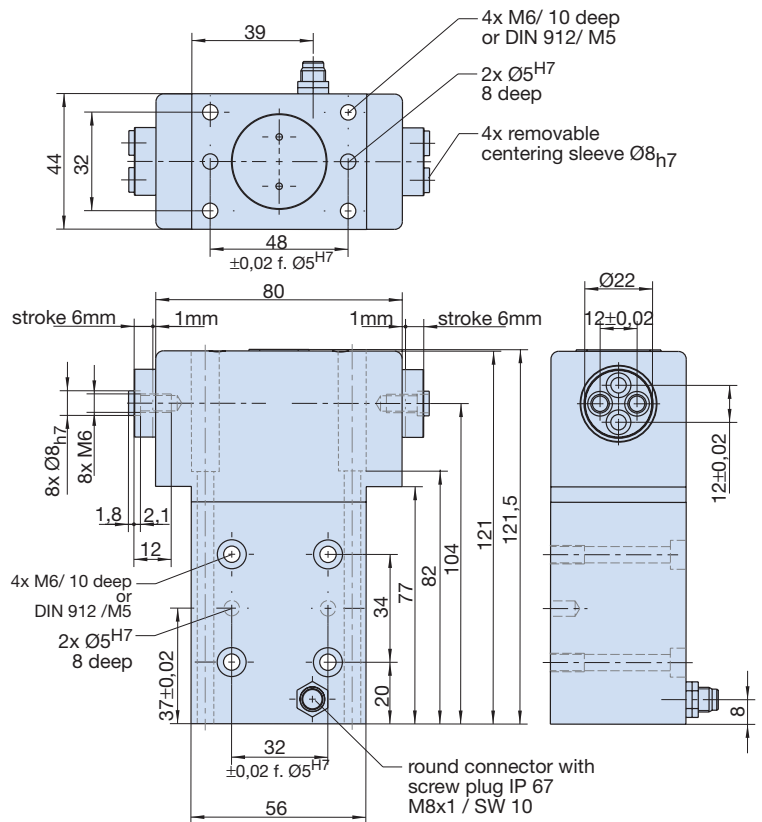
Advantages, benefits, comparisons and tips! Stacks of information all about this product are on page 183.

Gripping force as a function of jaw length



- Sommer-automatic
- Grippers**
- Separators
- Swivel units
- Rotating jaws
- Axial compensators
- Tool changers
- Linear cylinders
- Shock absorbers
- Rotary cylinders
- Air vane motors
- Vacuum components
- Accessories
- Quick finder

Order no.:	
<b>GEP1606 C</b>	<b>GEP1606 O</b>
Drive:	
Electr.	Electr.
Stroke per jaw [mm]:	
6	6
Gripping force in closing (adjustable) [N]*:	
280	-
Gripping force in opening (adjustable) [N]*:	
-	280
Self-locking via:	
mech. + el.	mech. + el.
Closing time/opening time [s]:	
0,2	0,2
Repeatability ± [mm]:	
0,02	0,02
Voltage [V DC]**:	
24	24
Current max. adjustable via potentiometer [mA]:	
210	210
Min./max. operating temperature [°C]:	
5/80	5/80
Weight [kg]:	
1,500	1,500



All data measured at 210 mA.

\* measured in power stroke at 2 mm before the end of the stroke

\*\* Voltage 12 Volt by request.

See Page 183 for Accessory list.

**DIN Rail Mountable Controller Included!**

Power supply required