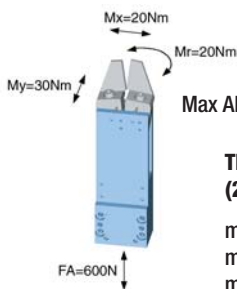


Parallel gripper		Three-jaw gripper		Angle gripper	Internal-hole gripper	Other grippers			Electric gripper			
SCH20	SCH23	ST36	ST40	ZK22	ZK33	GS65	RG0-30	RG10-60	SPG30-95	GF40	GF41	HM



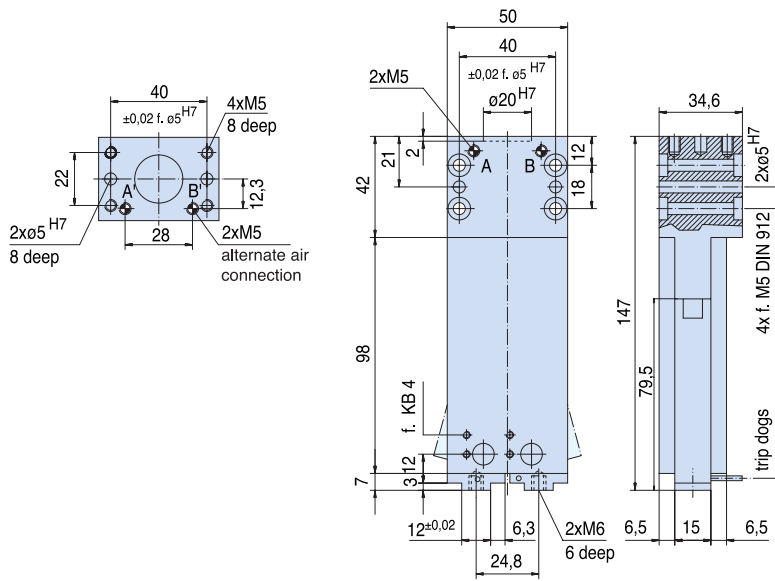
Sommer-automatic
Grippers
Separators
Swivel units
Rotating jaws
Axial compensators
Tool changers
Linear cylinders
Shock absorbers
Rotary cylinders
Air vane motors
Vacuum components
Accessories
Quick finder



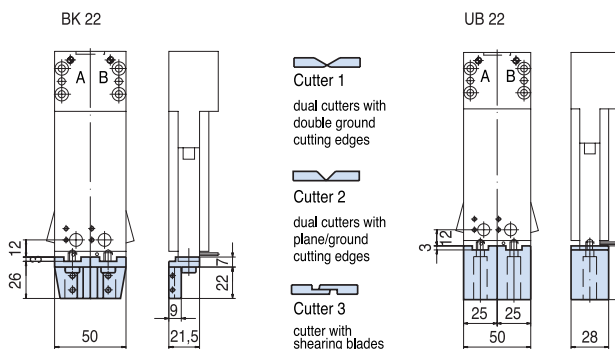
Max Allowable Forces on Jaws

These wire thicknesses can be cut (25 mm from top edge of gripper)

- max. Ø 3,5 mm Copper wire
- max. Ø 3,0 mm Brass wire
- max. Ø 2,0 mm Steel wire (St52)



Order no.:	BK22	Knife 1	Knife 2	Knife 3	UB22
------------	-------------	---------	---------	---------	-------------



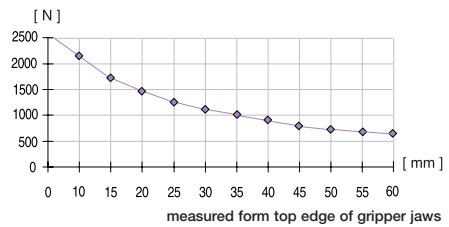
Cutting/Toggle tongs

Advantages, benefits, comparisons and tips! Stacks of information all about this product are on page 171.

Gripping force as a function of opening angle



Gripping force as a function of jaw length



Order no.:	ZK22		
Drive:	pneum.		
Stroke per jaw [°]:	7,5		
Gripping force in closing [N]:	2150		
Gripping torque in closing [Nm]*:	58		
Self-locking via:	mech.		
Closing time/opening time [s]:	0,15		
Repeatability ± [mm]:	0,1		
Min./max. operating pressure [bar]:	3/8		
Air volume per cycle [cm³]:	10		
Min./max. operating temperature [°C]:	5/80		
Temp. resistant version up to 150° C [add to part number]:	T2		
Piston diameter [mm]:	30		
Weight [kg]:	0,62		

All data measured at 6 bar.

All data measured at 10 mm from top edge of gripper jaw.

* measured at 1° opening angle/jaw.

See Page 171 for Accessory list.