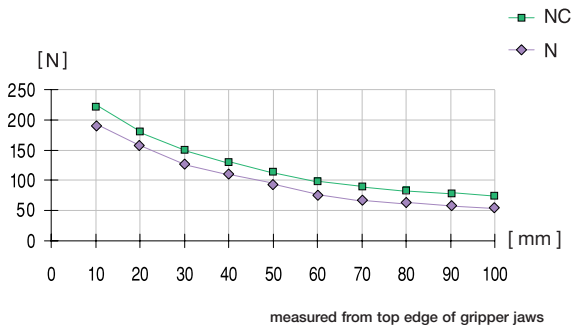


Parallel Gripper	Three-jaw gripper	Angle gripper	Internal-hole gripper	Other grippers	Electric Gripper
GG25	GG32	GG50	GG70	GG100	



Sealed angle gripper

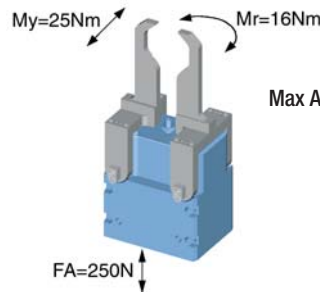
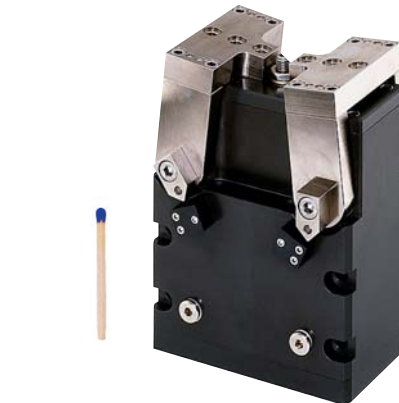
Advantages, benefits, comparisons and tips!
Stacks of information all about this product are on page 143.



Order no.:	
GG32 N	GG32 NC
Drive:	
pneum.	pneum.
Stroke per jaw [°]:	
35	35
Gripping torque in closing and opening [Nm]:	
7,9	-
Gripping torque in closing [Nm]:	
-	9
Self-locking via:	
DSV1/8	Spring
Closing time/opening time [s]:	
0,2	0,2
Repeatability ± [mm]:	
0,05	0,05
Min./max. operating pressure [bar]:	
3/10	5/10
Air volume per cycle [cm³]:	
25	25
Min./max. operating temperature. [°C]:	
5/80	5/80
Temp. resistant version up to 150°C [add to part number]:	
T	T
Piston diameter [mm]:	
32	32
Weight [kg]:	
0,65	0,75

All data measured at 6 bar.

See Page 143 for Accessory list.



Max Allowable Forces on Jaws

Sommer-automatic
Grippers
Separators
Swivel units
Rotating jaws
Axial compensators
Tool changers
Linear cylinders
Shock absorbers
Rotary cylinders
Air vane motors
Vacuum components
Accessories
Quick finder

