

Parallel Gripper **Three-jaw gripper** Angle gripper Internal-hole gripper Other grippers Electric Gripper

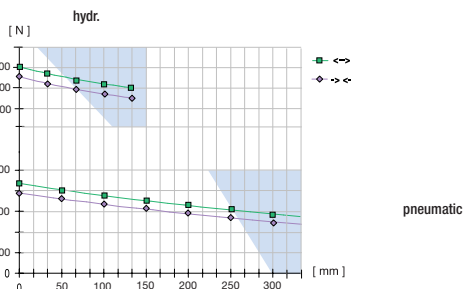
GD530 GD540 GD560



Three-jaw long-stroke gripper with T-slot guide

Advantages, benefits, comparisons and tips! Stacks of information all about this product are on page 124.

Gripping force as a function of jaw length

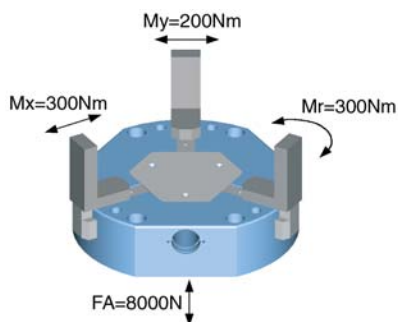


Colored area: increased wear and tear to be expected - possibly reduce pressure

Order no.:	
GD530	GD530
-	H
Drive:	
pneum.	hydr.
Stroke per jaw [mm]:	
30	30
Gripping force in closing and opening [N]:	
1300	6900
Self-locking via:	
DSV 1/8	-
Closing time/opening time [s]:	
0,3	0,5
Repeatability ± [mm]:	
0,05	0,05
Min./max. operating pressure [bar]:	
3/6	10/40
Air volume per cycle [cm³]:	
170	-
Oil volume per cycle [cm³]:	
-	170
Min./max. operating temperature [°C]:	
5/80	5/80
Temp. resistant version up to 150°C [add to part number]	
T	T
Piston diameter [mm]:	
32	32
Weight [kg]:	
8,00	8,00

All data measured at 6 bar (hydr. 30 bar).

See Page 124 for Accessory list.



Sommer-automatic

Grippers

Separators

Swivel units

Rotating jaws

Axial compensators

Tool changers

Linear cylinders

Shock absorbers

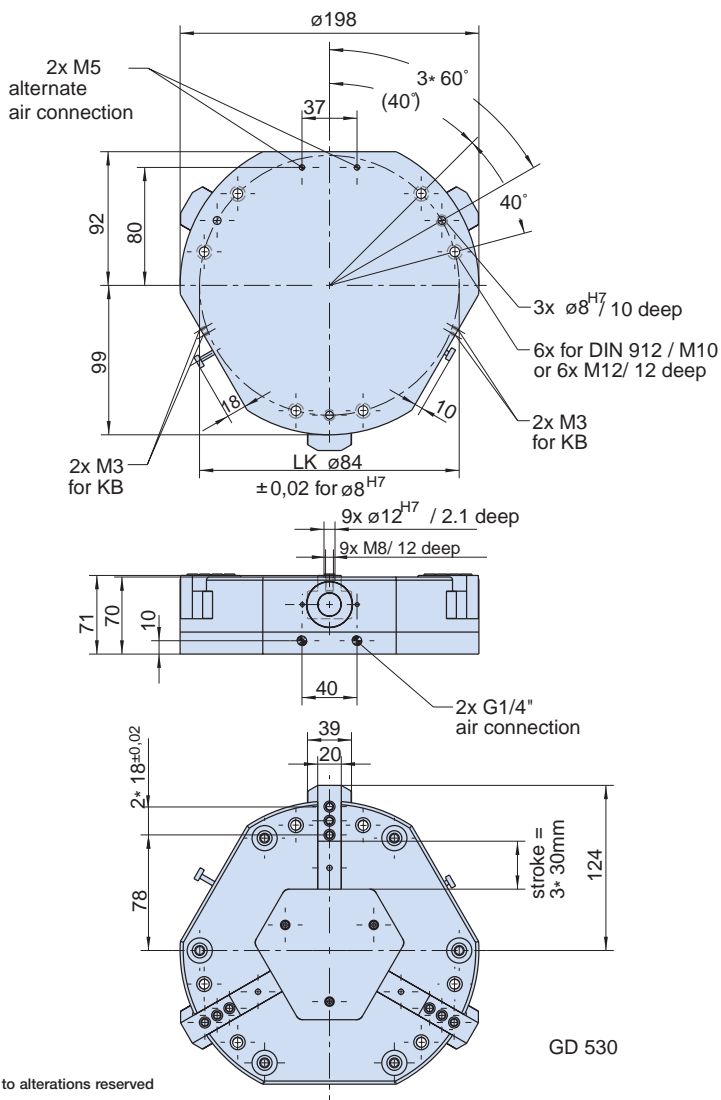
Rotary cylinders

Air vane motors

Vacuum components

Accessories

Quick finder



GD 530

Right to alterations reserved