

Parallel gripper

Three-jaw gripper

Angle gripper

Internal-hole gripper

Other grippers

Electric gripper

GH6040	GH6060	GH6080	GH6140	GH6160	GH6180	GH6240	GH6460	GH64100	GH62100	GH6460	GH64100	Universal jaw
---------------	---------------	---------------	--------	--------	--------	--------	--------	---------	---------	--------	---------	---------------



Sommer-automatic

Grippers

Separators

Swivel units

Rotating jaws

Axial compensators

Tool changers

Linear cylinders

Shock absorbers

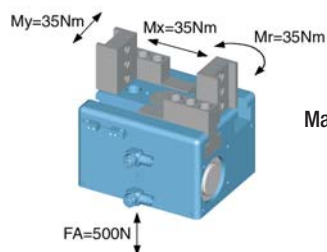
Rotary cylinders

Air vane motors

Vacuum components

Accessories

Quick finder

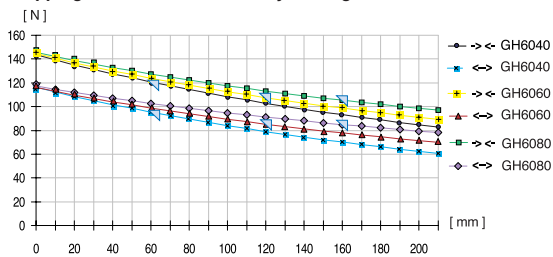


Max Allowable Forces on Jaws

Long-stroke gripper with T-slot guide

Advantages, benefits, comparisons and tips! Stacks of information all about this product are on page 87.

Gripping force as a function of jaw length

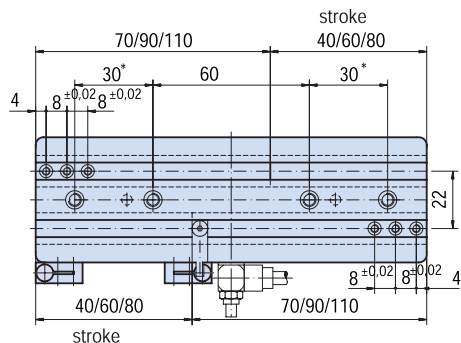
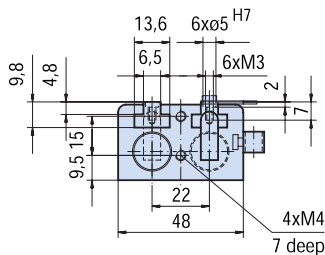
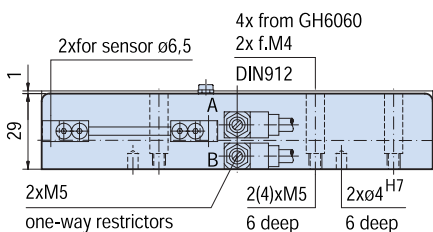
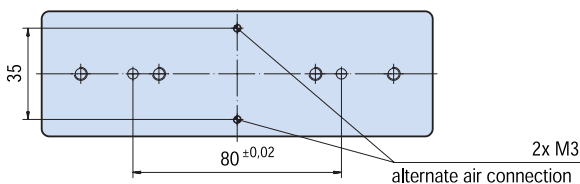


Colored area: increased wear and tear to be expected

Order no.:		
GH6040	GH6060	GH6080
Drive:		
pneum.	pneum.	pneum.
Stroke per jaw [mm]:		
40	60	80
Gripping force in closing [N]:		
145	145	145
Gripping force in opening [N]:		
115	115	115
Self-locking via:		
DSV1/8	DSV1/8	DSV1/8
Closing time/opening time [s]:		
0,3	0,35	0,4
Repeatability ± [mm]:		
0,05	0,05	0,05
Min./max. operating pressure [bar]:		
4 / 10	4 / 10	4 / 10
Air volume per cycle [cm³]:		
20	30	40
Min./max. operating temperature [°C]:		
5 / 80	5 / 80	5 / 80
Temp. resistant version up to 150° C [add to part number]:		
T3	T3	T3
Piston diameter [mm]:		
14	14	14
Weight [kg]:		
0,45	0,59	0,75

All data measured at 6 bar.

See Page 87 for Accessory list.



* from GH 6060 on