

Parallel gripper

Three-jaw gripper

Angle gripper

Internal-hole gripper

Other grippers

Electric gripper

GP78

GP80

GP88



Sommer-automatic

Grippers

Separators

Swivel units

Rotating jaws

Axial compensators

Tool changers

Linear cylinders

Shock absorbers

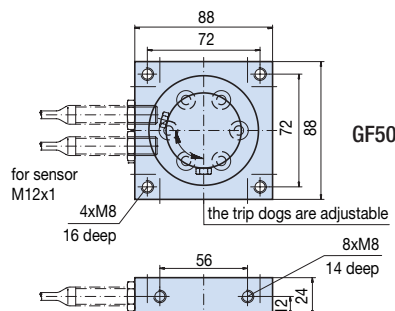
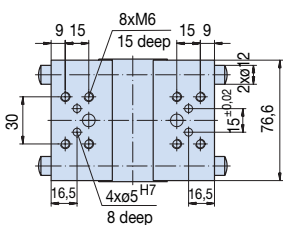
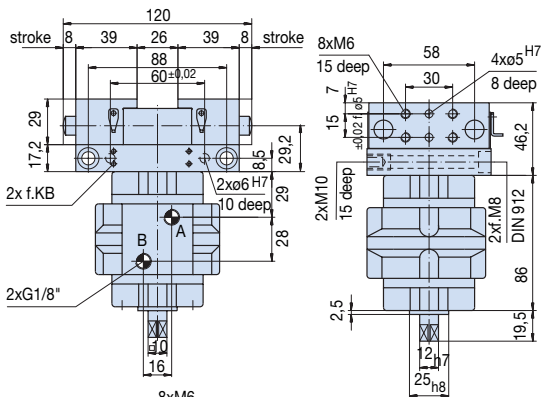
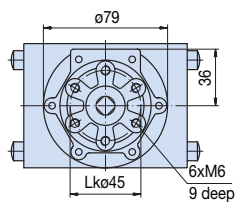
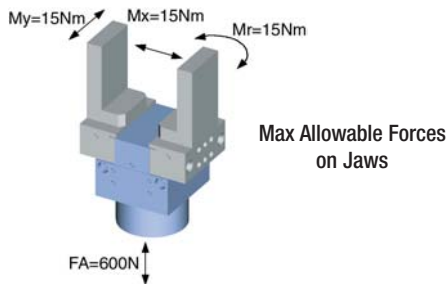
Rotary cylinders

Air vane motors

Vacuum components

Accessories

Quick finder



Position inquiry:

Order no.: GF50
Inquiry with interim position

Alternative:

Order no.: DB50
Flange with stop lever

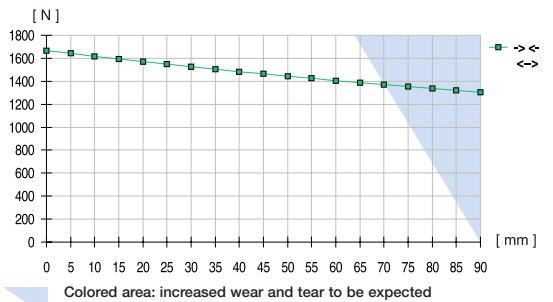
Order no.: AI-M8x1-38
Stop-stroke adjusting screw

Order no.: NJ12-E2
Proximity switch

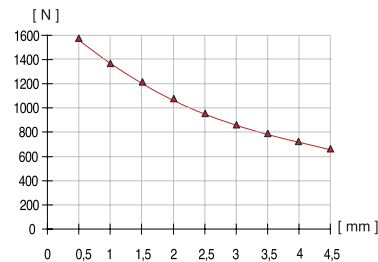
Parallel gripper
with eccentric cam

Advantages, benefits, comparisons and tips!
Stacks of information all about this product are on page 75.

Gripping force as a function of jaw length (measured at 1mm before the end of stroke)



Gripping force as a function of stroke



Before end of stroke

Order no.:	GP88
Drive:	pneum.
Stroke per jaw [mm]:	8
Gripping force in closing and opening [N]:	1650
Self-locking via:	mech.
Closing time/opening time [s]:	0,08
Repeatability ± [mm]:	0,05
Min./max. operating pressure [bar]:	3 / 8
Air volume per cycle [cm³]:	27
Min./max. operating temperature [°C]:	5 / 60
Weight [kg]:	1,984

All data measured at 6 bar.

See Page 75 for Accessory list.