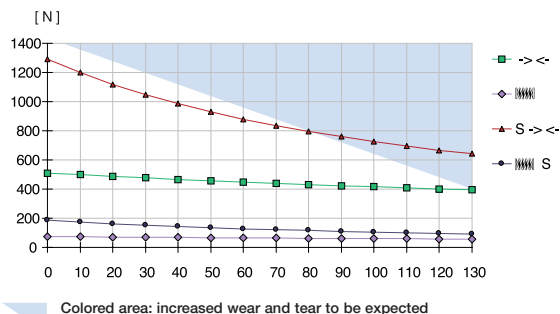


<b>Parallel gripper</b>	Three-jaw gripper	Angle gripper	Internal-hole gripper	Other grippers	Electric gripper
GP224	<b>GP240</b>	GP260	GP280		

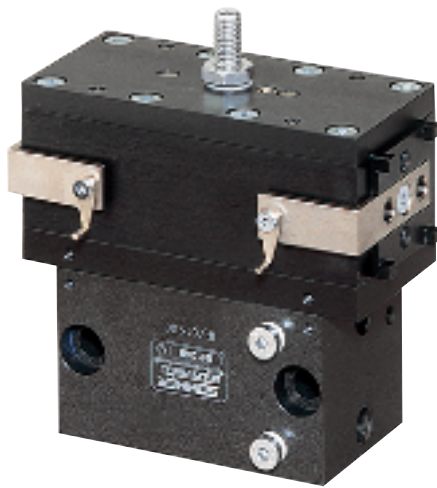
## Parallel gripper with sealed square guide

Advantages, benefits, comparisons and tips! Stacks of information all about this product are on page 47.

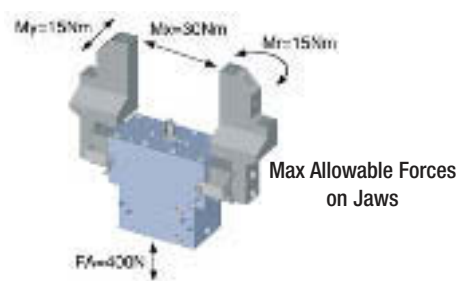
Gripping force as a function of jaw length



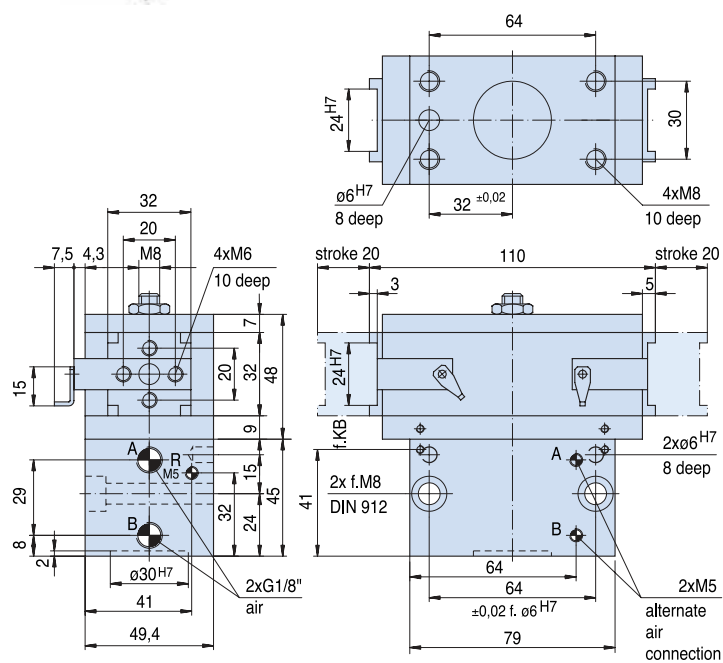
Colored area: increased wear and tear to be expected



- Sommer-automatik
- Grippers**
- Separators
- Swivel units
- Rotating jaws
- Axial compensators
- Tool changers
- Linear cylinders
- Shock absorbers
- Rotary cylinders
- Air vane motors
- Vacuum components
- Accessories
- Quick finder



Order no.:			
GP240	GP240 S	GP240 /99	GP240 S/99
Drive:			
pneum.	pneum.	pneum.	pneum.
Stroke per jaw [mm]:			
20	8	20	8
Gripping force in closing and opening [N]:			
-	-	435	1105
Gripping force in closing [N]:			
510	1290	-	-
Self-locking via:			
Spring	Spring	DSV1/8	DSV1/8
Closing time/opening time [s]:			
0,15	0,15	0,12	0,12
Repeatability ± [mm]:			
0,05	0,05	0,05	0,05
Min./max. operating pressure [bar]:			
5 / 8	5 / 8	5 / 8	5 / 8
Air volume per cycle [cm³]:			
49	49	49	49
Min./max. operating temperature [°C]:			
5 / 80	5 / 80	5 / 80	5 / 80
Temp. resistant version up to 150° C [add to part number]:			
T3	T3	T3	T3
Piston diameter [mm]:			
40	40	40	40
Weight [kg]:			
1,16	1,16	1,16	1,16



All data measured at 6 bar.

See Page 47 for Accessory list.

GP240S

