

Parallel gripper

Three-jaw gripper

Angle gripper

Internal-hole gripper

Other grippers

Electric gripper

GP1803

GP1804

GP1806

GP1808

GP1810

GP1812

GP1816

GP1820

GP1830

Universal Jaw



Sommer-automatic

Grippers

Separators

Swivel units

Rotating jaws

Axial compensators

Tool changers

Linear cylinders

Shock absorbers

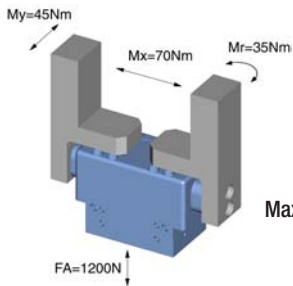
Rotary cylinders

Air vane motors

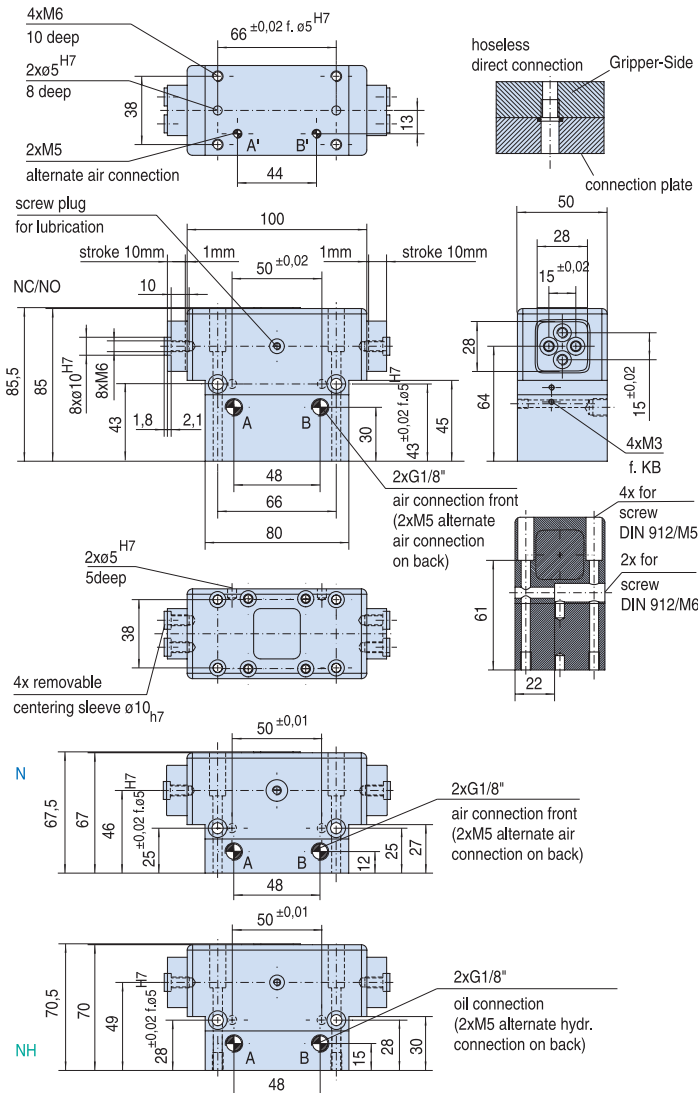
Vacuum components

Accessories

Quick finder



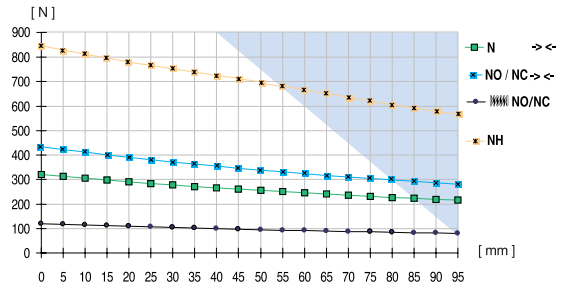
Max Allowable Forces on Jaws



Parallel gripper with sealed 4-sided guide

Advantages, benefits, comparisons and tips! Stacks of information all about this product are on page 35.

Gripping force as a function of jaw length



Colored area: increased wear and tear to be expected

Order no.:

GP1810 N	GP1810 NC	GP1810 NO	GP1810 NH
Drive:			
pneum.	pneum.	pneum.	hydr.
Stroke per jaw [mm]:			
10	10	10	10
Gripping force in closing and opening [N]:			
-	-	-	1360
Gripping force in closing [N]:			
420	640	-	-
Gripping force in opening [N]:			
840	-	1040	-
Self-locking via:			
DSV1/8	Spring	Spring	-
Closing time/opening time [s]:			
0,06	0,08	0,08	0,2
Repeatability ± [mm]:			
0,05	0,05	0,05	0,025
Min./max. operating pressure [bar]:			
-	-	-	10 / 30
Min./max. operating pressure for closing [bar]:			
4 / 8	4 / 8	5 / 8	-
Min./max. operating pressure for opening [bar]:			
4 / 4	5 / 8	4 / 4	-
Air volume per cycle [cm³]:			
42	72	72	-
Oil volume per cycle [cm³]:			
-	-	-	28
Min./max. operating temperature [°C]:			
5 / 80	5 / 80	5 / 80	5 / 80
Temp. resistant version up to 150° C [add to part number]:			
T3	T3	T3	T3
Piston diameter [mm]:			
40	40	40	30
Weight [kg]:			
0,9	1,1	1,1	0,9

All data measured at 6 bar (hydr. 30 bar).

See Page 35 for Accessory list.