

Parallel gripper

Three-jaw gripper

Angle gripper

Internal-hole gripper

Other grippers

Electric gripper

GP1803

GP1804

GP1806

GP1808

GP1810

GP1812

GP1816

GP1820

GP1830

Universal Jaw



Sommer-automatic

Grippers

Separators

Swivel units

Rotating jaws

Axial compensators

Tool changers

Linear cylinders

Shock absorbers

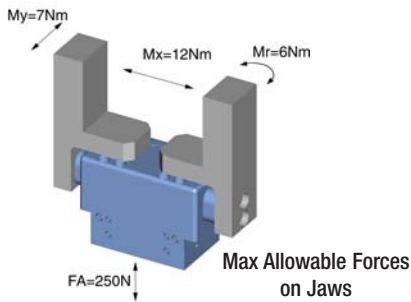
Rotary cylinders

Air vane motors

Vacuum components

Accessories

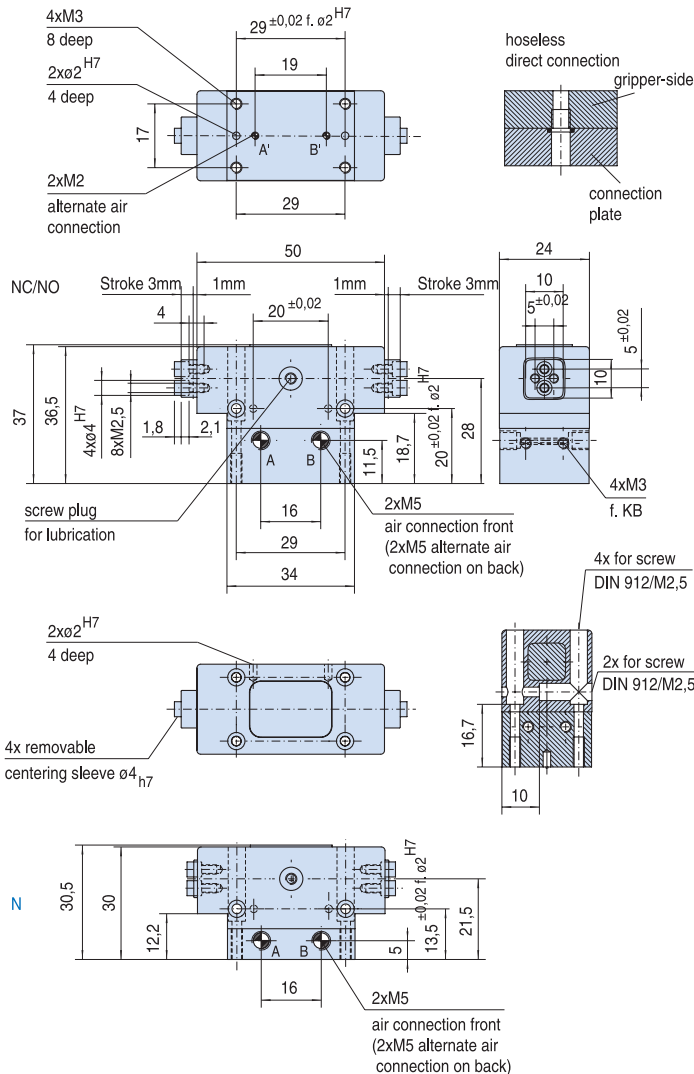
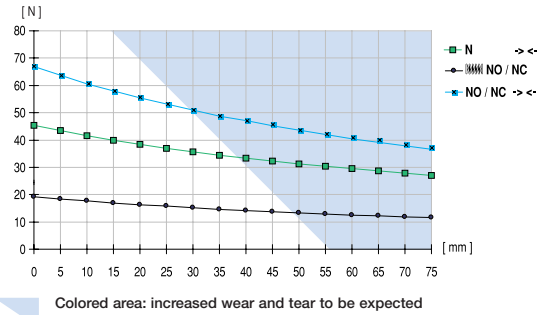
Quick finder



Parallel gripper
with sealed 4-sided guide

Advantages, benefits, comparisons and tips!
Stacks of information all about this product are on page 35.

Gripping force as a function of jaw length



Order no.:					
GP1803 N	GP1803 NC	GP1803 NO			
Drive:					
pneum.	pneum.	pneum.			
Stroke per jaw [mm]:					
3	3	3			
Gripping force in closing [N]:					
45	68	-			
Gripping force in opening [N]:					
48	-	70			
Self-locking via:					
DSV1/8	Spring	Spring			
Closing time/opening time [s]:					
0,02	0,03	0,03			
Repeatability ± [mm]:					
0,05	0,05	0,05			
Min./max. operating pressure for closing [bar]:					
4 / 8	4 / 8	5 / 8			
Min./max. operating pressure for opening [bar]:					
4 / 4	5 / 8	4 / 4			
Air volume per cycle [cm³]:					
2	4	4			
Min./max. operating temperature [°C]:					
5 / 80	5 / 80	5 / 80			
Temp. resistant version up to 150° C [add to part number]:					
T3	T3	T3			
Piston diameter [mm]:					
16	16	16			
Weight [kg]:					
0,13	0,15	0,15			

All data measured at 6 bar.

See Page 35 for Accessory list.