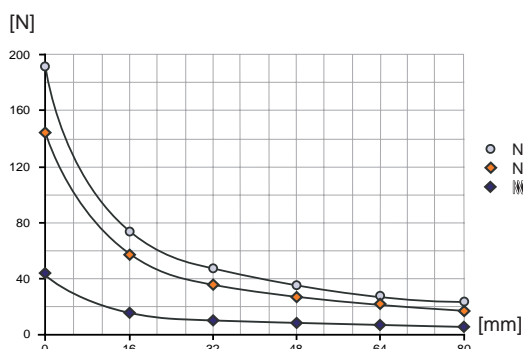


Angular Gripper



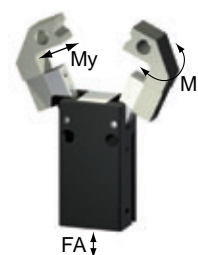
Picture shows MGW808N

Gripping force diagram
Gripping force as a function of jaw length.



Data measured from top of the housing

Forces and torques
Max allowable forces and torques on jaw.



Mr [Nm]:	1,3
My [Nm]:	1,3
FA [N]:	430

Included in scope of delivery



Centering sleeve
Order no. BDST40600

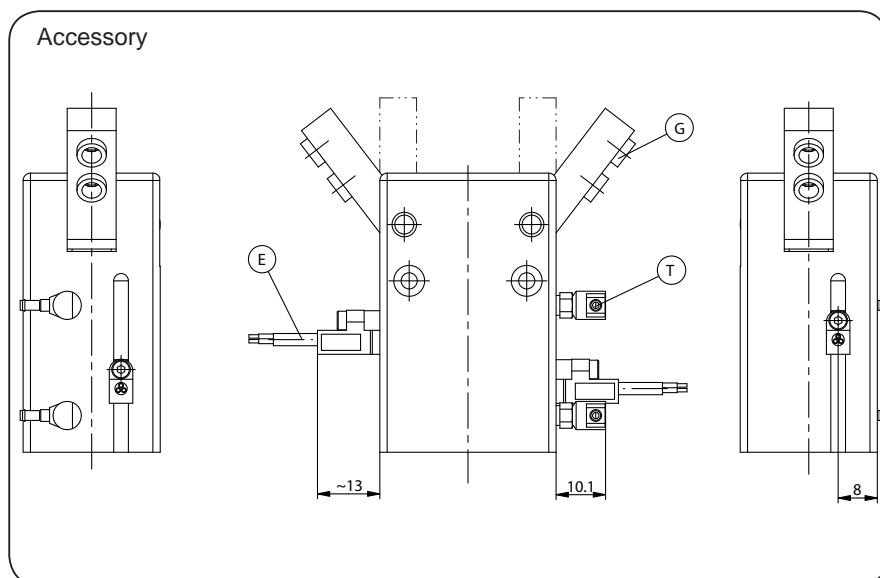
Recommended accessories



Pneumatic fittings
Order no. WVM3



Proximity switch
Order no. MFS103KHC42



Subject to change without prior notice



Proximity switch
Order no. MFS103SKHC42



Cable angled plug
Order no. KAW500



Plug 3 pole
Order no. S12-G-3

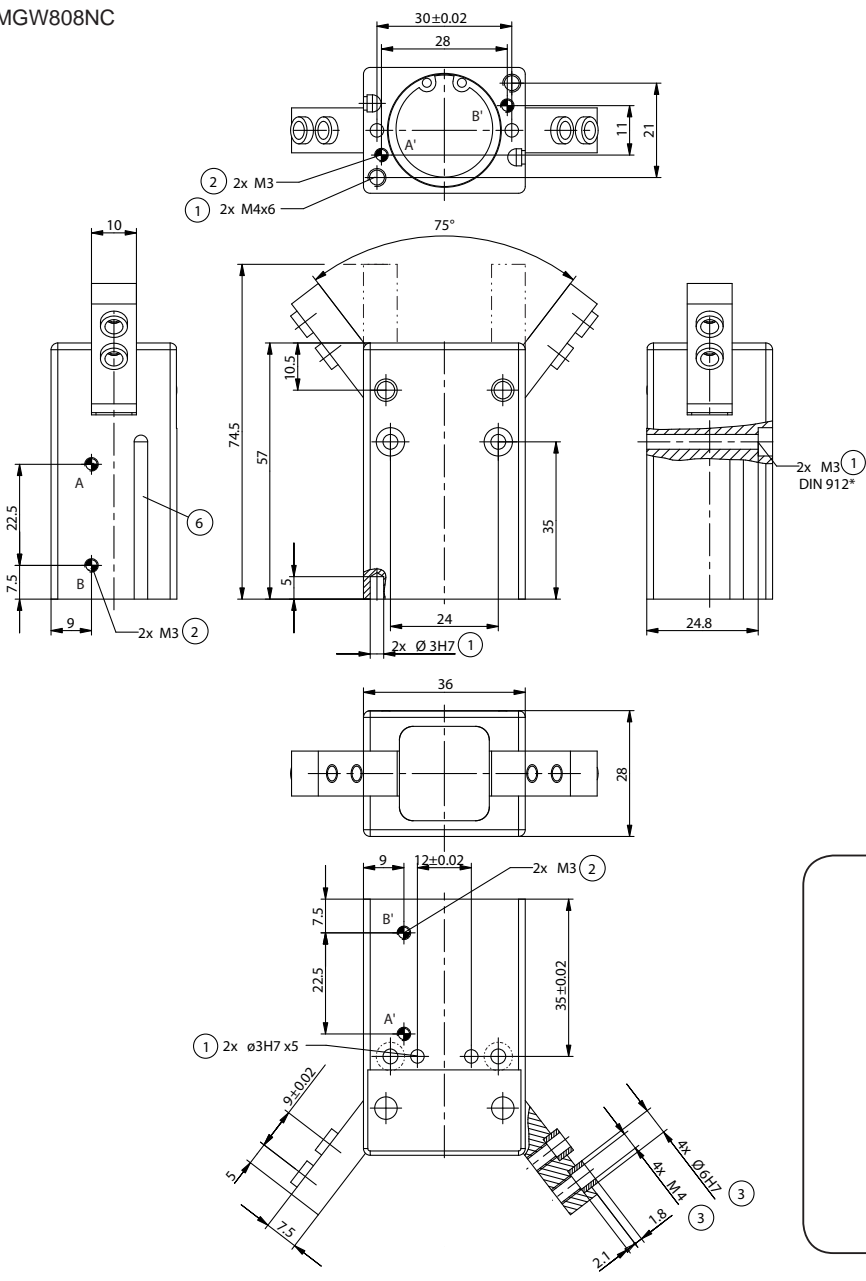


Pressure safety valve
Order no. DSV1/8

Order no.:	MGW808N	MGW808NC
Stroke per jaw [°]:	37,5	37,5
Gripping torque in closing [Nm]:	1,55	1,9
Gripping torque in opening [Nm]:	1,76	-
Recommended workpiece weight [kg]*:	0,28	0,35
Gripping torque secured by spring min. [Nm]:	-	0,43
Closing time / opening time [s]:	0,02 / 0,02	0,02 / 0,04
Repeatability +/- [mm]:	0,02	0,02
Min. operating pressure [bar]:	3	4
Max. operating pressure [bar]:	8	8
Min/max. operating temperature [°C]**:	5-80	5-80
Air volume per cycle [cm³]:	8,1	10,5
Weight [kg]:	0,18	0,19

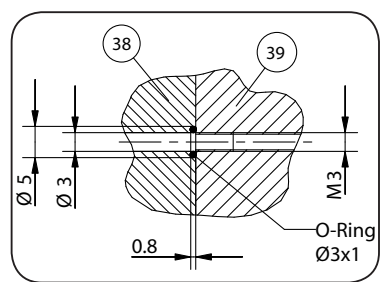
All data measured at 6 bar
 * Value determined with friction coefficient $\mu=0,1$ and safety factor $v=2$
 distance from top of the housing 17,5 mm
 ** High-temperature-resistant model (up to 150°C) add T to part number

MGW808NC

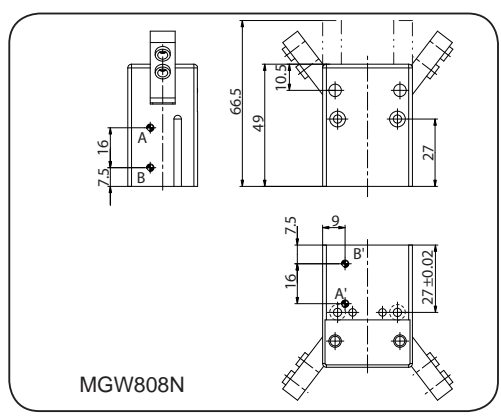


- ① Gripper mounting
- ② Power supply
- ③ Jaw fastening
- ⑥ Slot for magnetic field sensor
- ⊗ Adapter
- ⊗ Gripper
- Ⓐ Air connection (closing)
- Ⓑ Air connection (opening)
- Ⓐ Alternate air connection (closing)
- Ⓑ Alternate air connection (opening)

*according to DIN EN ISO 4762



hoseless power supply



MGW808N

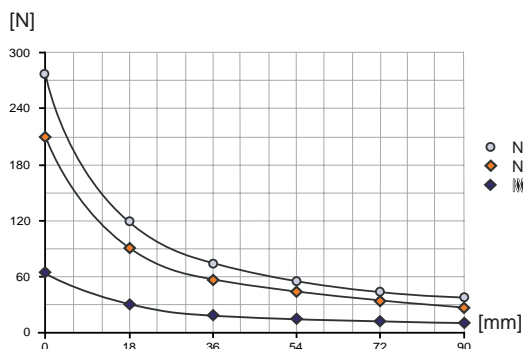
Subject to change without prior notice

Angular Gripper



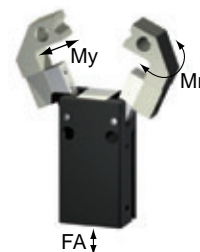
Picture shows MGW810N

Gripping force diagram
Gripping force as a function of jaw length.



Data measured from top of the housing

Forces and torques
Max allowable forces and torques on jaw.



Mr [Nm]:	1,6
My [Nm]:	1,6
FA [N]:	500

Included in scope of delivery



Centering sleeve
Order no. **BDS707540**

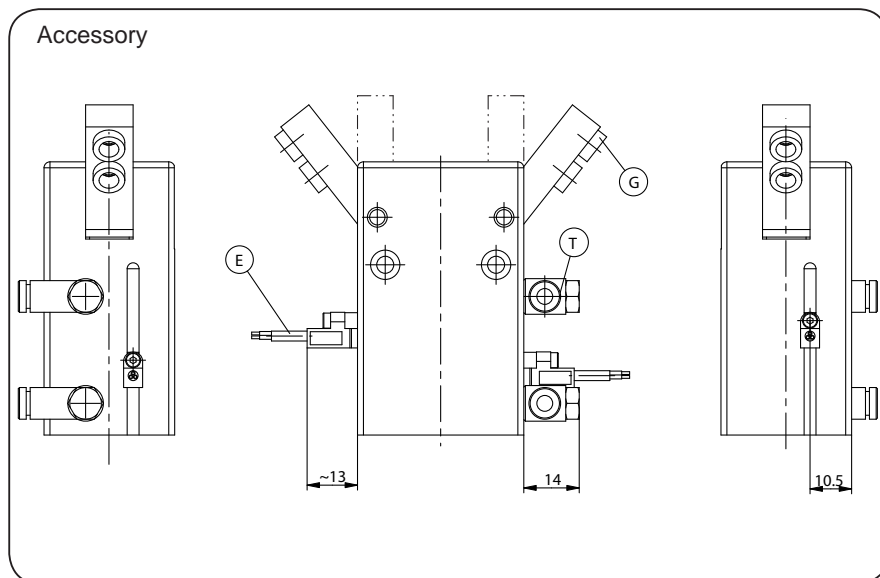
Recommended accessories



Pneumatic fittings
Order no. **WVM5**



Proximity switch
Order no. **MFS103KHC42**



Subject to change without prior notice



Proximity switch
Order no. **MFS103SKHC42**



Cable angled plug
Order no. **KAW500**



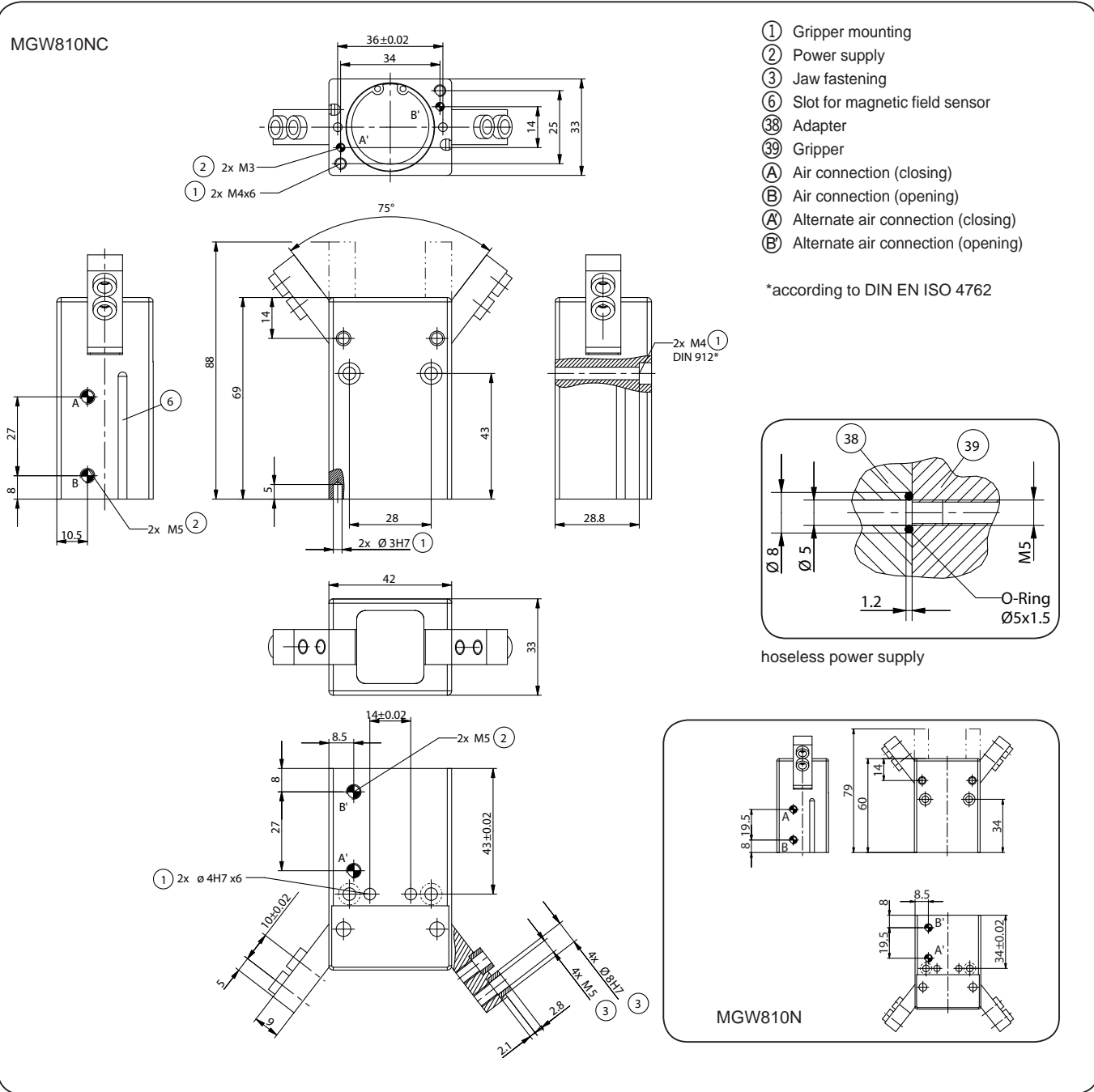
Plug 3 pole
Order no. **S12-G-3**



Pressure safety valve
Order no. **DSV1/8**

Order no.:	MGW810N	MGW810NC
Stroke per jaw [°]:	37,5	37,5
Gripping torque in closing [Nm]:	2,9	3,8
Gripping torque in opening [Nm]:	3,3	-
Recommended workpiece weight [kg]*:	0,45	0,6
Gripping torque secured by spring min. [Nm]:	-	0,91
Closing time / opening time [s]:	0,03 / 0,03	0,03 / 0,06
Repeatability +/- [mm]:	0,02	0,02
Min. operating pressure [bar]:	3	4
Max. operating pressure [bar]:	8	8
Min/max. operating temperature [°C]**:	5-80	5-80
Air volume per cycle [cm ³]:	14,1	18,4
Weight [kg]:	0,275	0,31

All data measured at 6 bar
 * Value determined with friction coefficient $\mu=0,1$ and safety factor $v=2$
 distance from top of the housing 19 mm
 ** High-temperature-resistant model (up to 150°C) add T to part number



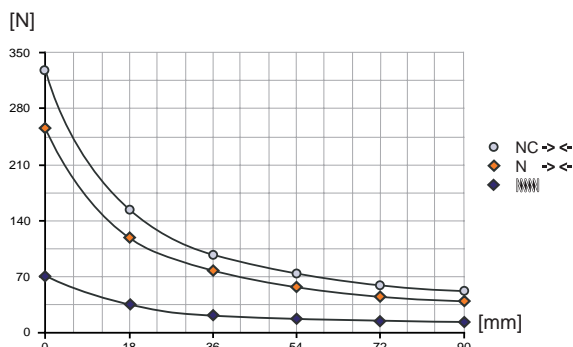
Subject to change without prior notice

Angular Gripper



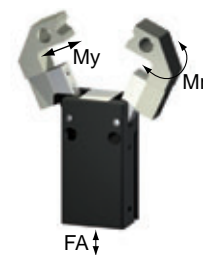
Picture shows MGW812N

Gripping force diagram
Gripping force as a function of jaw length.



Data measured from top of the housing

Forces and torques
Max allowable forces and torques on jaw.



Mr [Nm]:	2,3
My [Nm]:	2,3
FA [N]:	720

Included in scope of delivery



Centering sleeve
Order no. **BDST07540**

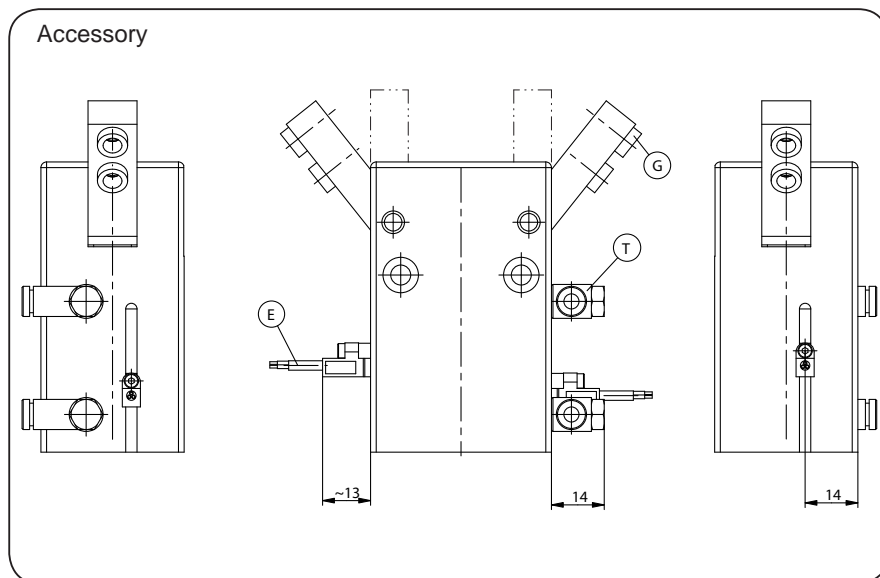
Recommended accessories



Pneumatic fittings
Order no. **WVM5**



Proximity switch
Order no. **MFS103KHC42**



Subject to change without prior notice



Proximity switch
Order no. **MFS103SKHC42**



Cable angled plug
Order no. **KAW500**



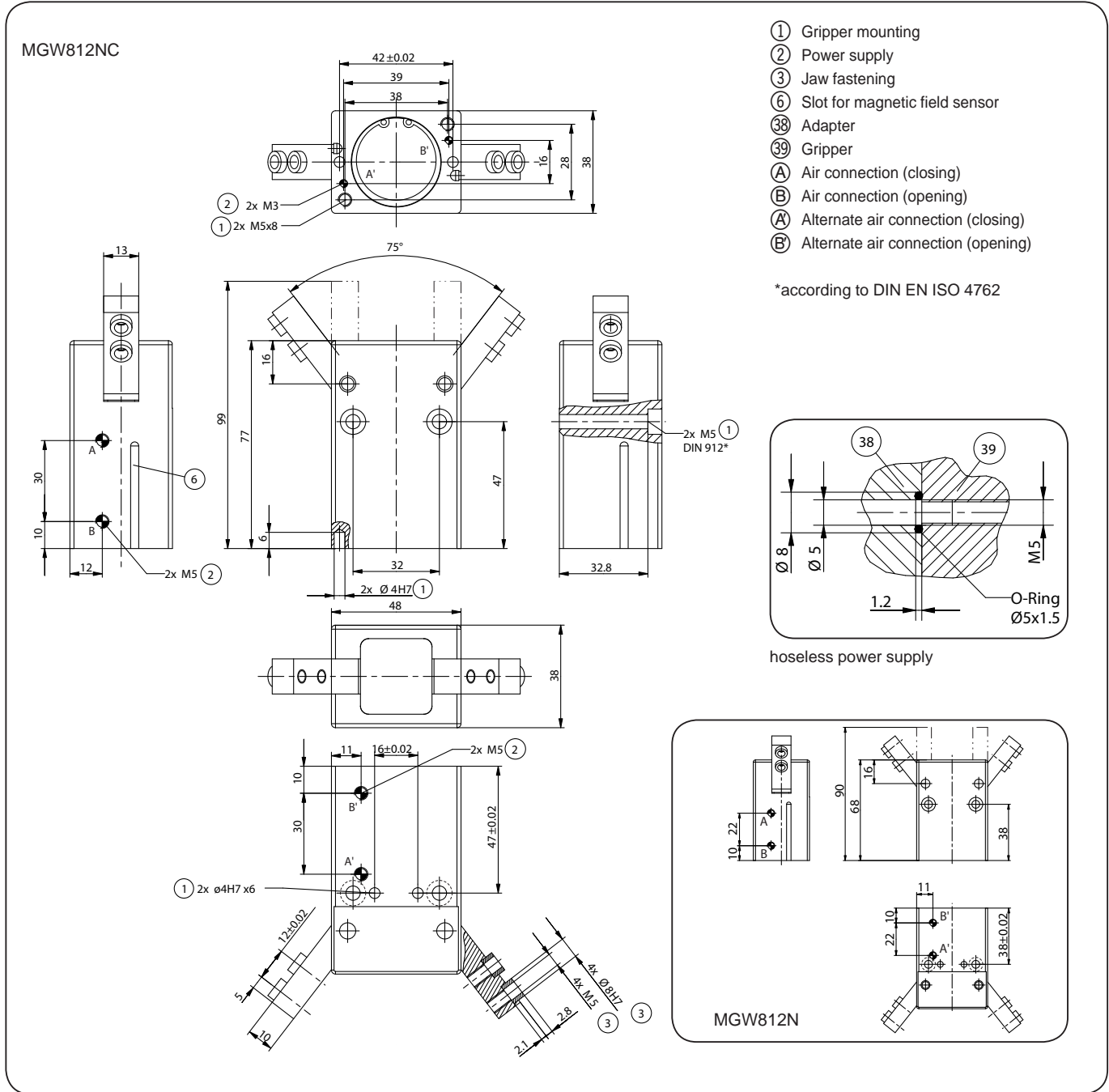
Plug 3 pole
Order no. **S12-G-3**



Pressure safety valve
Order no. **DSV1/8**

Order no.:	MGW812N	MGW812NC
Stroke per jaw [°]:	37,5	37,5
Gripping torque in closing [Nm]:	4,1	5,2
Gripping torque in opening [Nm]:	4,55	-
Recommended workpiece weight [kg]*:	0,55	0,7
Gripping torque secured by spring min. [Nm]:	-	1,13
Closing time / opening time [s]:	0,03 / 0,03	0,03 / 0,06
Repeatability +/- [mm]:	0,02	0,02
Min. operating pressure [bar]:	3	4
Max. operating pressure [bar]:	8	8
Min/max. operating temperature [°C]**:	5-80	5-80
Air volume per cycle [cm³]:	22,1	27,6
Weight [kg]:	0,4	0,45

All data measured at 6 bar
 * Value determined with friction coefficient $\mu=0,1$ and safety factor $v=2$
 distance from top of the housing 22 mm
 ** High-temperature-resistant model (up to 150°C) add T to part number



Subject to change without prior notice