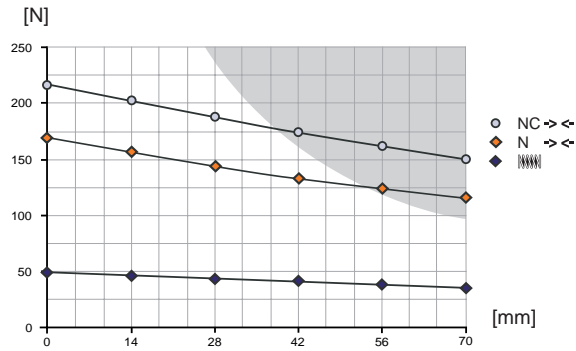


Parallel Gripper



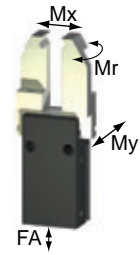
Picture shows MGP808N

Gripping force diagram
Gripping force as a function of jaw length.



Coloured area: a higher wear and tear has to be taken into consideration, possibly reduction of pressure

Forces and torques
Max allowable forces and torques on jaw.



Mr [Nm]:	6,2
Mx [Nm]:	21
My [Nm]:	7,3
FA [N]:	450

Included in scope of delivery



Centering sleeve
Order no. BDST40600

Recommended accessories



Pneumatic fittings
Order no. WVM5



Proximity switch
Order no. MFS103KHC42



Proximity switch
Order no. MFS103SKHC42



Cable angled plug
Order no. KAW500

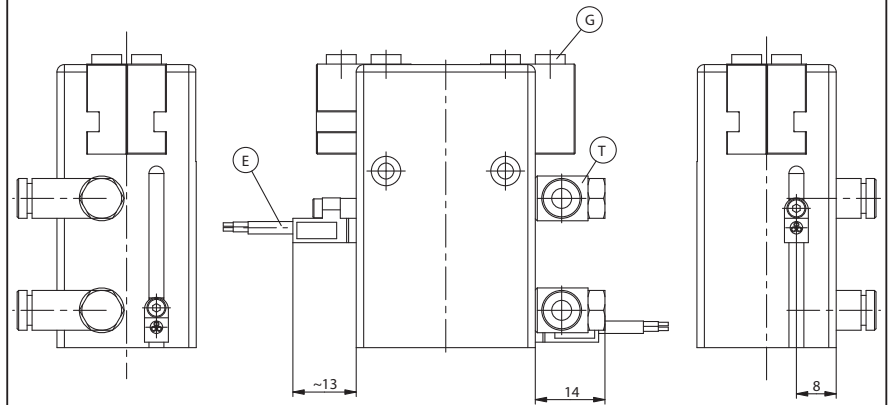


Plug 3- pole
Order no. S12-G-3



Pressure safety valve
Order no. DSV1/8

Accessory



Subject to change without prior notice



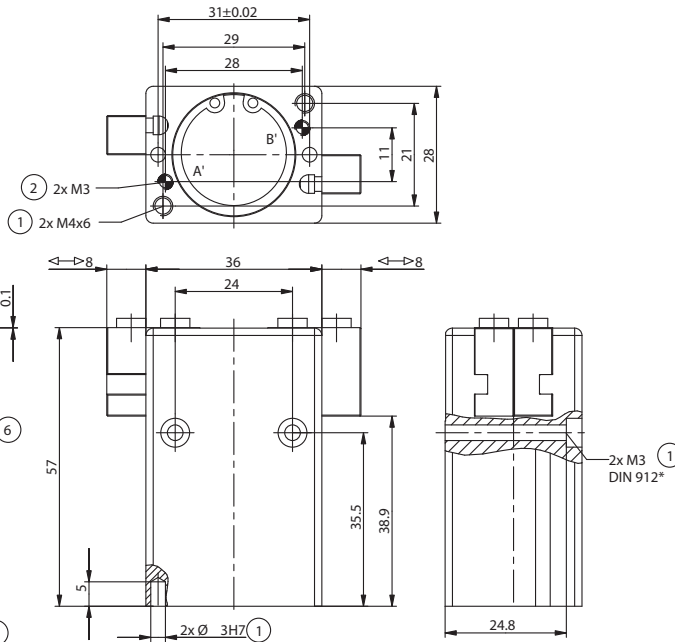
Order no.:	MGP808N	MGP808NC
Stroke per jaw [mm]:	8	8
Gripping force in closing [N]:	170	220
Gripping force in opening [N]:	192	-
Recommended workpiece weight [kg]*:	0,8	1,1
Gripping force secured by spring min. [N]:	-	50
Closing time / opening time [s]:	0,04 / 0,04	0,04 / 0,06
Repeatability +/- [mm]:	0,02	0,02
Min. operating pressure [bar]:	3	4
Max. operating pressure [bar]:	8	8
Min/max. operating temperature [°C]**:	5-80	5-80
Air volume per cycle [cm³]:	8,4	11,3
Weight [kg]:	0,16	0,18

All data measured at 6 bar

* Value determined with friction coefficient $\mu=0,1$ and safety factor $v=2$

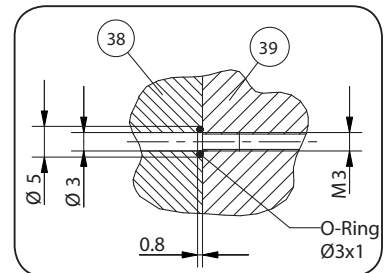
** High-temperature-resistant model (up to 150°C) add T to part number

MGP 808 NC

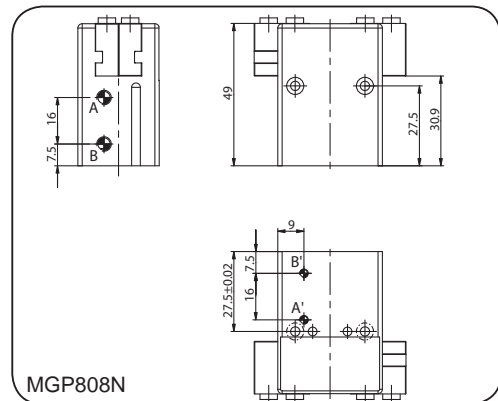
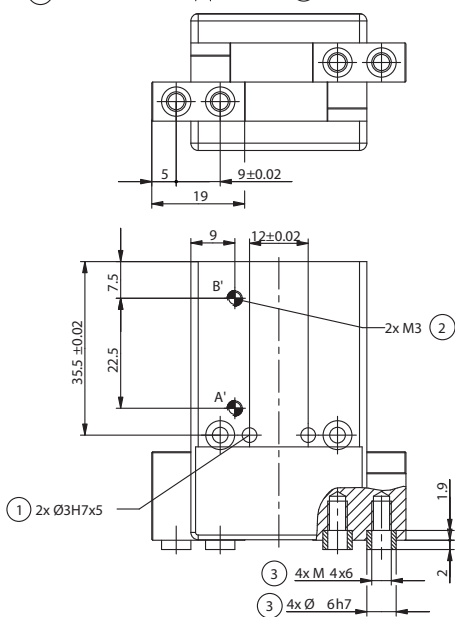


- ① Gripper mounting
- ② Power supply
- ③ Jaw fastening
- ⑥ Slot for magnetic field sensor
- ⊗ Adapter
- ⊗ Gripper
- Ⓐ Air connection (closing)
- Ⓑ Air connection (opening)
- Ⓐ Alternate air connection (closing)
- Ⓑ Alternate air connection (opening)

*according to DIN EN ISO 4762



hoseless power supply



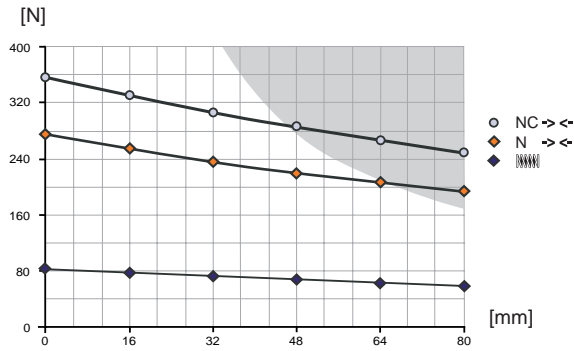
Subject to change without prior notice

Parallel Gripper



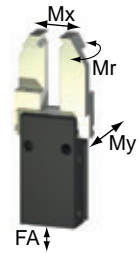
Picture shows MGP810N

Gripping force diagram
Gripping force as a function of jaw length.



Coloured area: a higher wear and tear has to be taken into consideration, possibly reduction of pressure

Forces and torques
Max allowable forces and torques on jaw.



Mr [Nm]:	8,8
Mx [Nm]:	32
My [Nm]:	11,7
FA [N]:	588

Included in scope of delivery



Centering sleeve
Order no. BDST07540

Recommended accessories



Pneumatic fittings
Order no. WVM5



Proximity switch
Order no. MFS103KHC42



Proximity switch
Order no. MFS103SKHC42



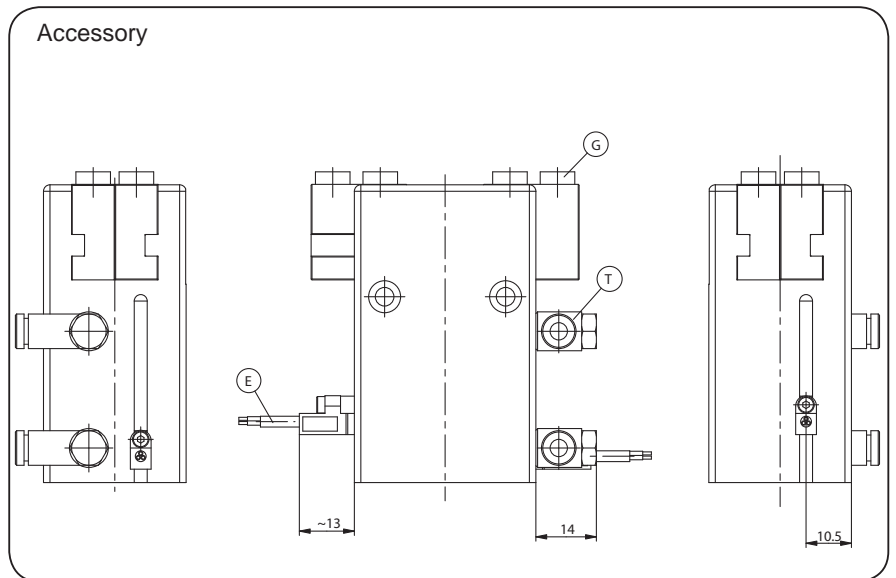
Cable angled plug
Order no. KAW500



Plug 3-pole
Order no. S12-G-3



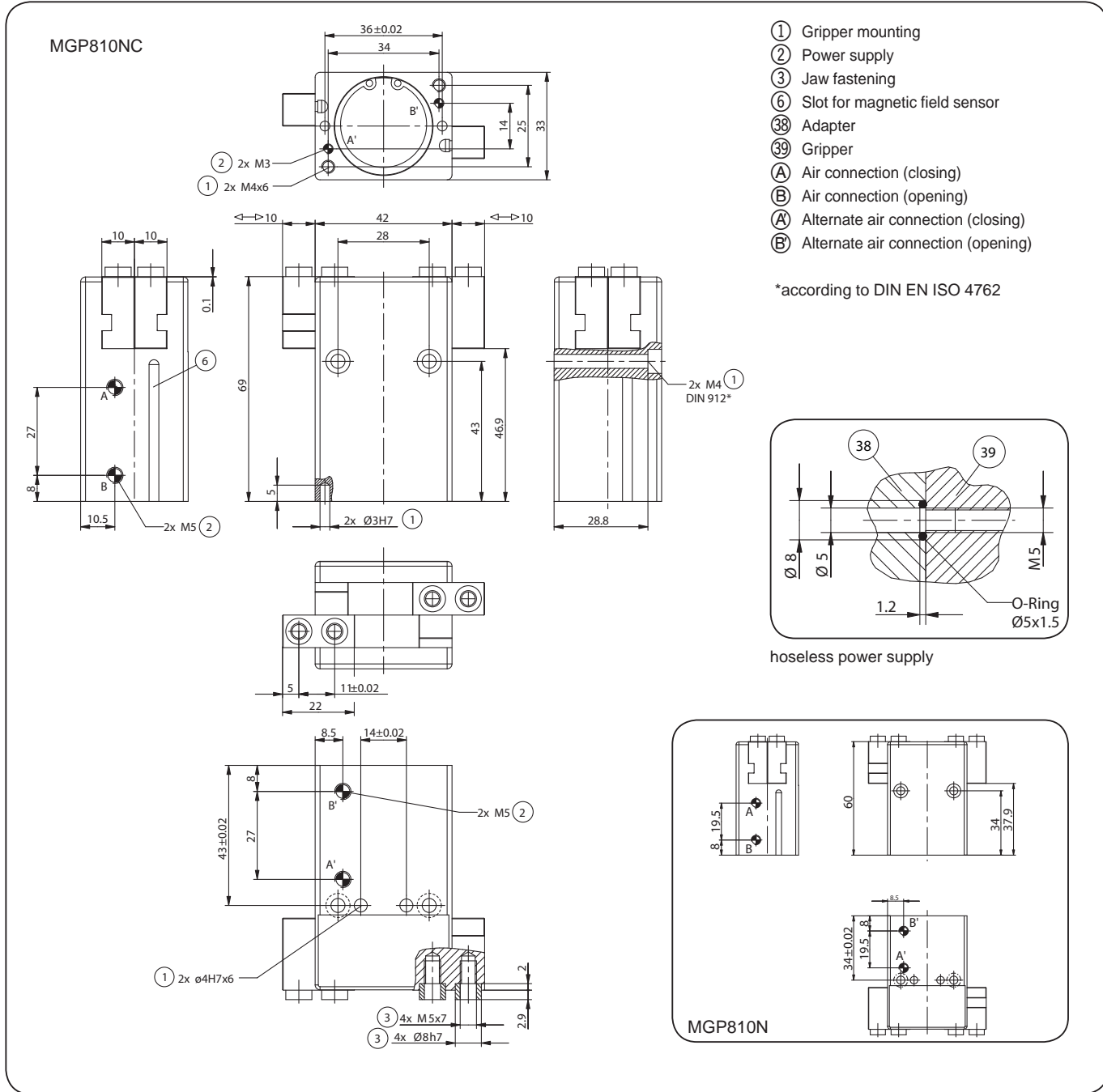
Pressure safety valve
Order no. DSV1/8



Subject to change without prior notice

Order no.:	MGP810N	MGP810NC
Stroke per jaw [mm]:	10	10
Gripping force in closing [N]:	270	350
Gripping force in opening [N]:	311	-
Recommended workpiece weight [kg]*:	1,4	1,8
Gripping force secured by spring min. [N]:	-	80
Closing time / opening time [s]:	0,04 / 0,04	0,04 / 0,06
Repeatability +/- [mm]:	0,02	0,02
Min. operating pressure [bar]:	3	4
Max. operating pressure [bar]:	8	8
Min/max. operating temperature [°C]**:	5-80	5-80
Air volume per cycle [cm³]:	15,2	20,5
Weight [kg]:	0,28	0,32

All data measured at 6 bar
 * Value determined with friction coefficient $\mu=0,1$ and safety factor $v=2$
 ** High-temperature-resistant model (up to 150°C) add T to part number



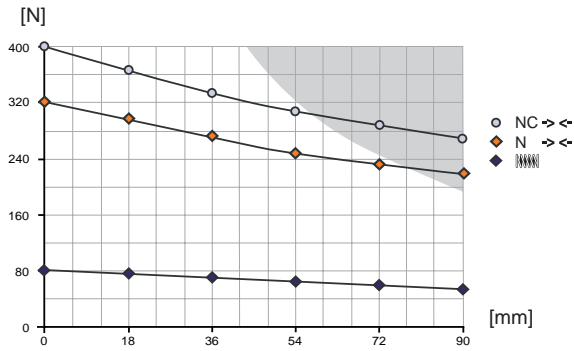
Subject to change without prior notice

Parallel Gripper



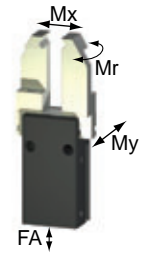
Picture shows MGP812N

Gripping force diagram
Gripping force as a function of jaw length.



Coloured area: a higher wear and tear has to be taken into consideration, possibly reduction of pressure

Forces and torques
Max allowable forces and torques on jaw.



Mr [Nm]:	11,3
Mx [Nm]:	42
My [Nm]:	15,6
FA [N]:	792

Included in scope of delivery



Centering sleeve
Order no. **BDST07540**

Recommended accessories



Pneumatic fittings
Order no. **WVM5**



Proximity switch
Order no. **MFS103KHC42**



Proximity switch
Order no. **MFS103SKHC42**



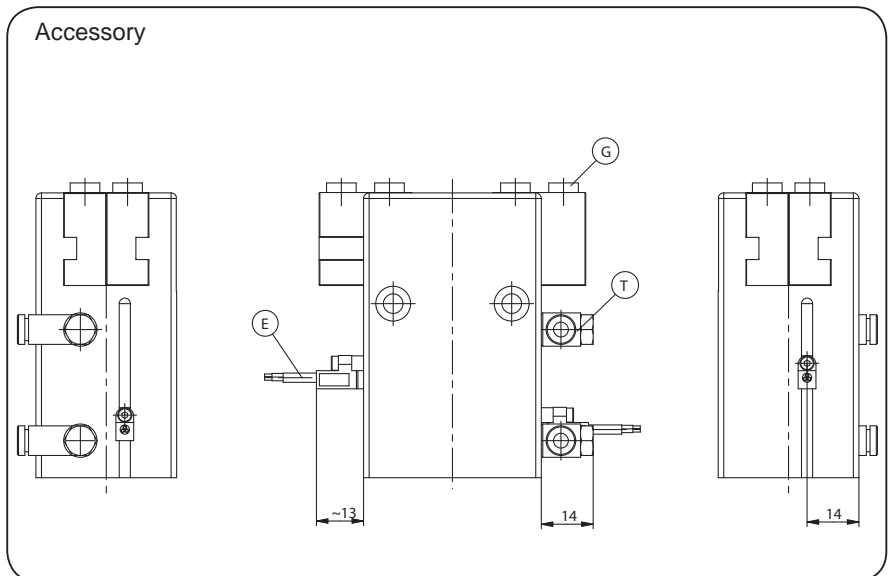
Cable angled plug
Order no. **KAW500**



Plug 3- pole
Order no. **S12-G-3**



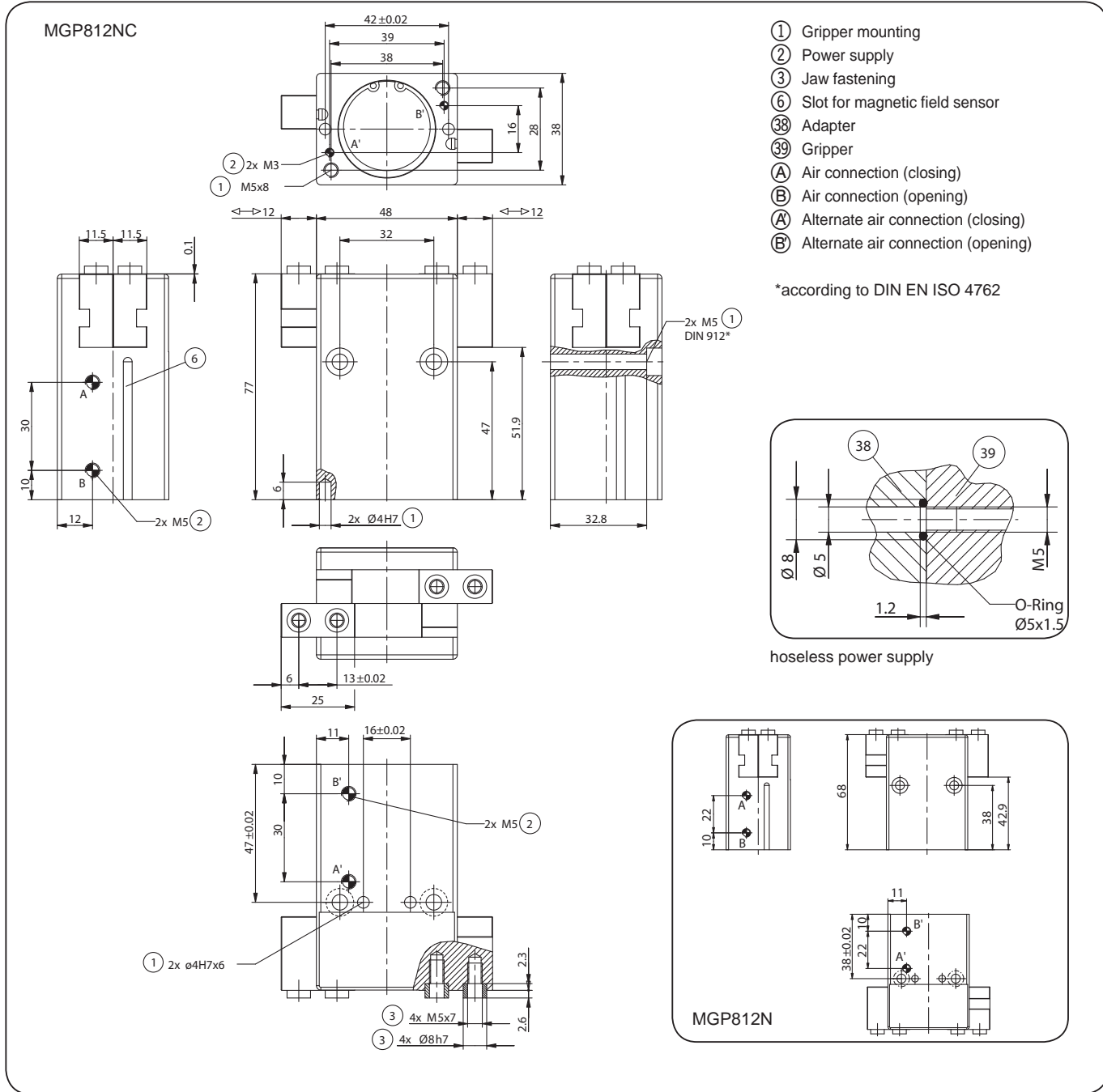
Pressure safety valve
Order no. **DSV1/8**



Subject to change without prior notice

Order no.:	MGP812N	MGP812NC
Stroke per jaw [mm]:	12	12
Gripping force in closing [N]:	320	400
Gripping force in opening [N]:	353	-
Recommended workpiece weight [kg]*:	1,6	2
Gripping force secured by spring min. [N]:	-	80
Closing time / opening time [s]:	0,06 / 0,06	0,06 / 0,08
Repeatability +/- [mm]:	0,02	0,02
Min. operating pressure [bar]:	3	4
Max. operating pressure [bar]:	8	8
Min/max. operating temperature [°C]**:	5-80	5-80
Air volume per cycle [cm³]:	22,3	28,1
Weight [kg]:	0,41	0,46

All data measured at 6 bar
 * Value determined with friction coefficient $\mu=0,1$ and safety factor $v=2$
 ** High-temperature-resistant model (up to 150°C) add T to part number



Subject to change without prior notice