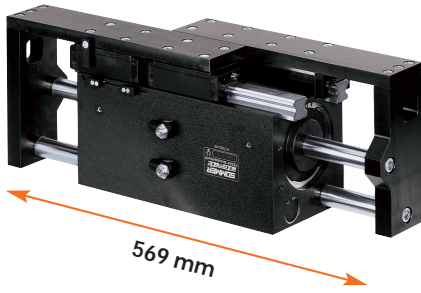


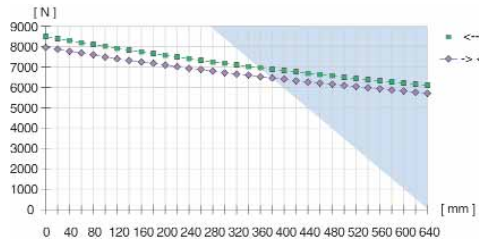
# Heavy-Duty Long-Stroke Gripper - with Linear Guides

Next Page ►



## Gripping-force diagram

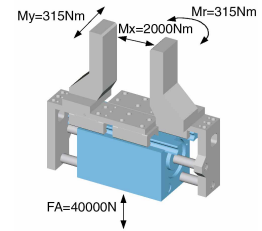
Gripping force as a function of jaw length.



Colored area: increased wear or tear to be expected.

## Forces and moments

Max. allowable static forces and moments.



## Included with purchase



Proximity switch bracket  
Part No. KB8-28

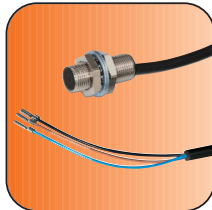


Flow control air fittings  
Part No. DRV1/4x8

## Recommended accessories



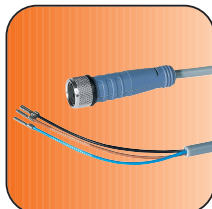
Proximity switch  
(Quick connect)  
Part No. NJ8-E2S



Proximity switch  
(Quick connect)  
Part No. NJ8-E2



Cable (Angle plug)  
Part No. KAW500



Cable (Straight plug)  
Part No. KAG500

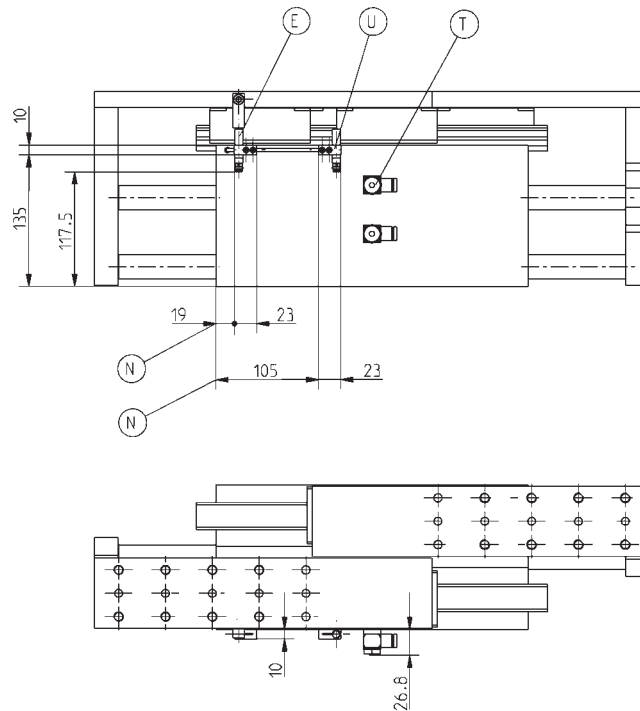


Connector 3-plug  
Part No. S12-G-3



Pressure safety valve/  
one-way valve  
Part No. DSV1/8

## Accessories



(N) Sensor positioning



Order No.:	GH76100
Stroke per jaw [mm]:	100
Gripping force in closing [N]:	8000
Gripping force in opening [N]:	8500
Max. suggested workpiece weight [kg]*:	40.8
Closing time/opening time [s]:	0.7
Repeatability +/- [mm]:	0.05
Operating pressure min./max. [bar]:	3/8
Operating temperature min./max. [°C]**:	5/80
Air volume per cycle [cm <sup>3</sup> ]:	1500
Weight [kg]:	36

All data measured at 6 bar

\* Value determined with friction coefficient  $\mu = 0.1$  and safety factor  $v = 2$

\*\* High-temperature-resistant model (up to 150° C) add "T" to part number

