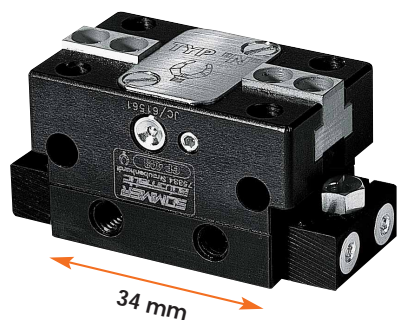


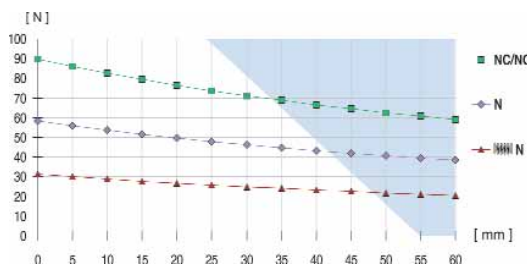
# Parallel Gripper - with T-slot Guides

Next Page ►



## Gripping-force diagram

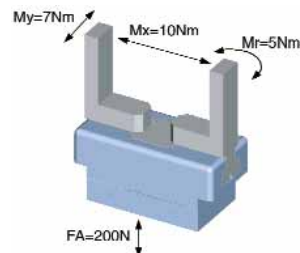
Gripping force as a function of jaw length.



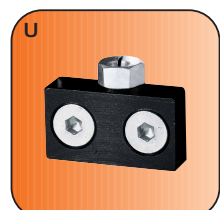
Colored area: increased wear or tear to be expected.

## Forces and moments

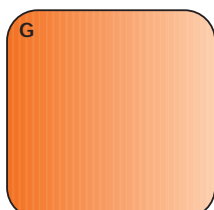
Max. allowable static forces and moments.



## Included with purchase



Proximity switch bracket  
Part No. KB3-03



Centering sleeves  
Part No. BDST40400

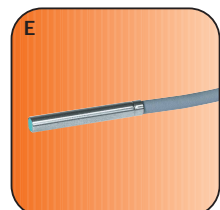
## Recommended accessories



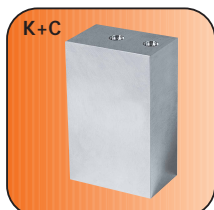
Compressed air fittings  
(Angled)  
Part No. WVM5



Compressed air fittings  
(Straight)  
Part No. GVM5



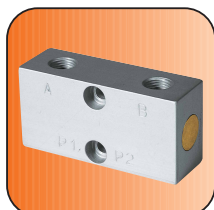
Proximity switch  
Part No. NJ3-E2/03



Universal jaw set  
Part No. UB403 (Al)  
Part No. UB403ST (St)

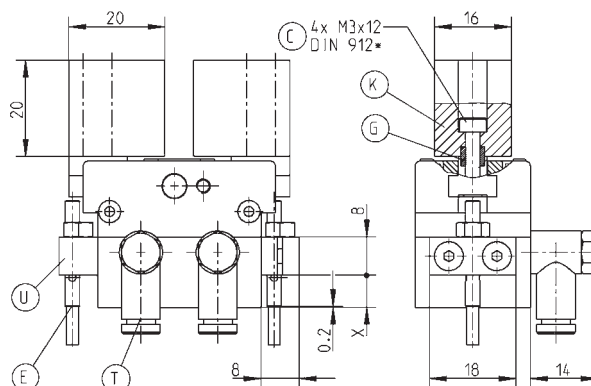


Connector 3-plug  
Part No. S12-G-3



Pressure safety valve/  
one-way valve  
Part No. DSV1/8

## Accessories



X = GP 403 NC /NO	6.7
GP 403 N	0.2
Y = GP 403 NC /NO	0.2
GP 403 N	-6.3

\* equivalent to ISO 4762

Order No.:	GP403N	GP403NC	GP403NO
Stroke per jaw [mm]:	3	3	3
Gripping force in closing and opening [N]:	58	-	-
Gripping force in closing [N]:	-	90	-
Gripping force in opening [N]:	-	-	90
Max. suggested workpiece weight [g]*:	296	459	459
Gripping force secured by spring min./max. [N]:	-	18/32	18/32
Closing time/opening time [s]:	0.01	0.01	0.01
Repeatability +/- [mm]:	0.025	0.025	0.025
Operating pressure min./max. [bar]:	3/8	5/8	5/8
Operating temperature min./max. [°C]**:	5/80	5/80	5/80
Air volume per cycle [cm³]:	2	3	3
Weight [g]:	82	96	96

All data measured at 6 bar

\* Value determined with friction coefficient  $\mu = 0.1$  and safety factor  $v = 2$

\*\* High-temperature-resistant model (up to 150° C) add "T" to part number

